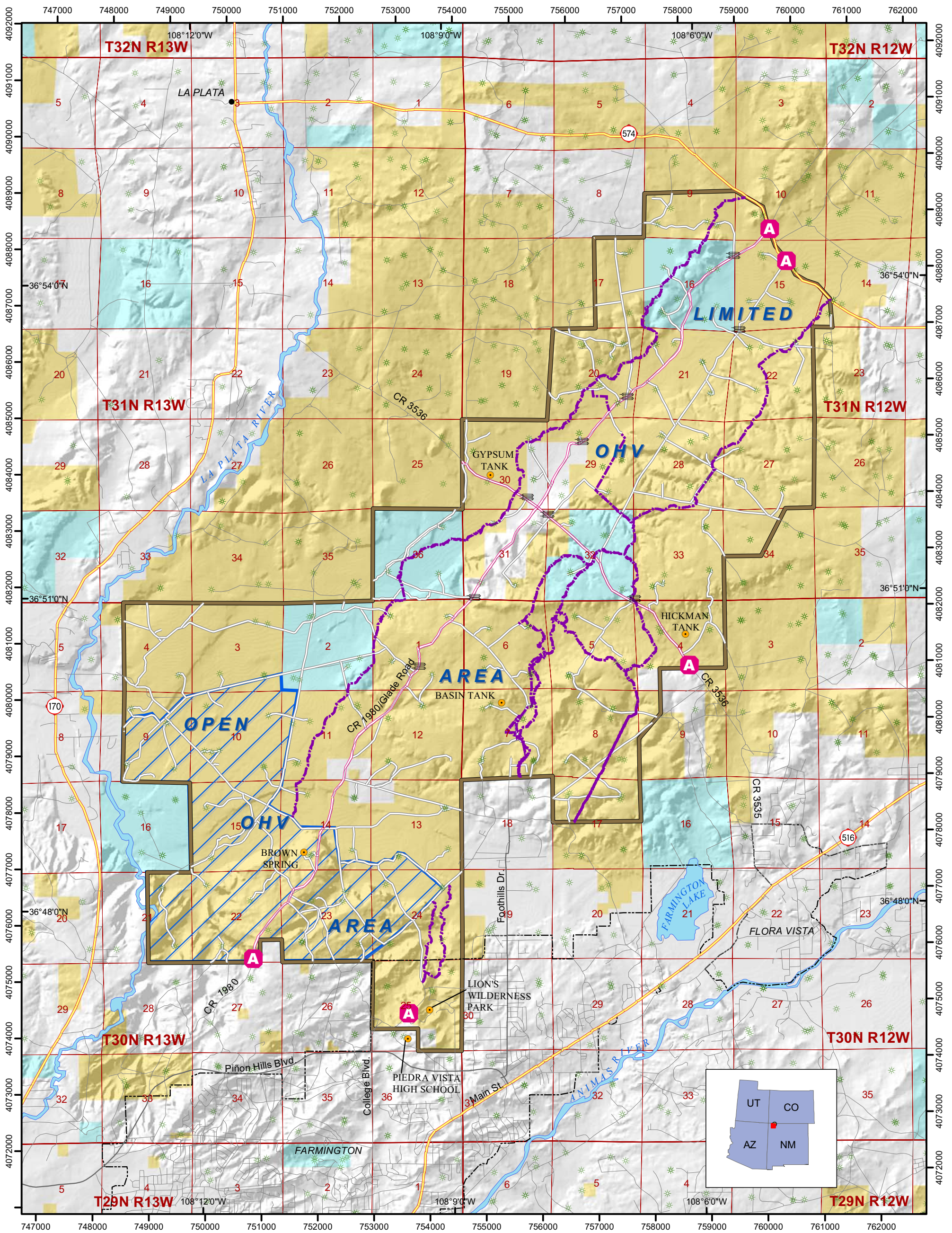




# GLADE RUN RECREATION AREA



- A** Access Point
- Glade Run Boundary: Limited OHV Area--All Vehicles Restricted to Maintained Roads and Designated Trails
- Multi Use Trail: NO ATV's. Open to Pedestrians, Mountain Bikes, Motorcycles and Horses.

- Open OHV Area: ATV/4WD Cross Country Travel Allowed
  - Active Well
  - Landmark
  - Cattle Guard/Gate
- (OHV=Off Highway Vehicle)*

- \*Road Classification**
  - State Highway
  - Local Road
  - Main Glade Access Roads
  - Established Dirt Road or 2-Track
- \*Note: All oil field roads may not be shown.*

- City Boundary
- Surface Ownership**
- Bureau of Land Management
- Private
- State

0 0.25 0.5 1 Mile  
0 0.5 1 2 Kilometers

Scale 1:63,360 or 1 inch equals 1 mile  
Projection and Grid: Universal Transverse Mercator; Zone 12; Meters  
Datum: North American Datum of 1983  
Created October 18, 2004

*No warranty is made by the Bureau of Land Management as to the accuracy, reliability, or completeness of these data for individual use or aggregate use with other data, or for purposes not intended by BLM. Spatial information may not meet National Map Accuracy Standards. This information may be updated without notification.*

