

# WATER

***Note: All Brass Fittings supplied shall meet the new low lead requirements of the U.S. Safe Drinking Water Act, which goes into effect in January 2014.***

## CONSTRUCTION STANDARDS SHEET INDEX

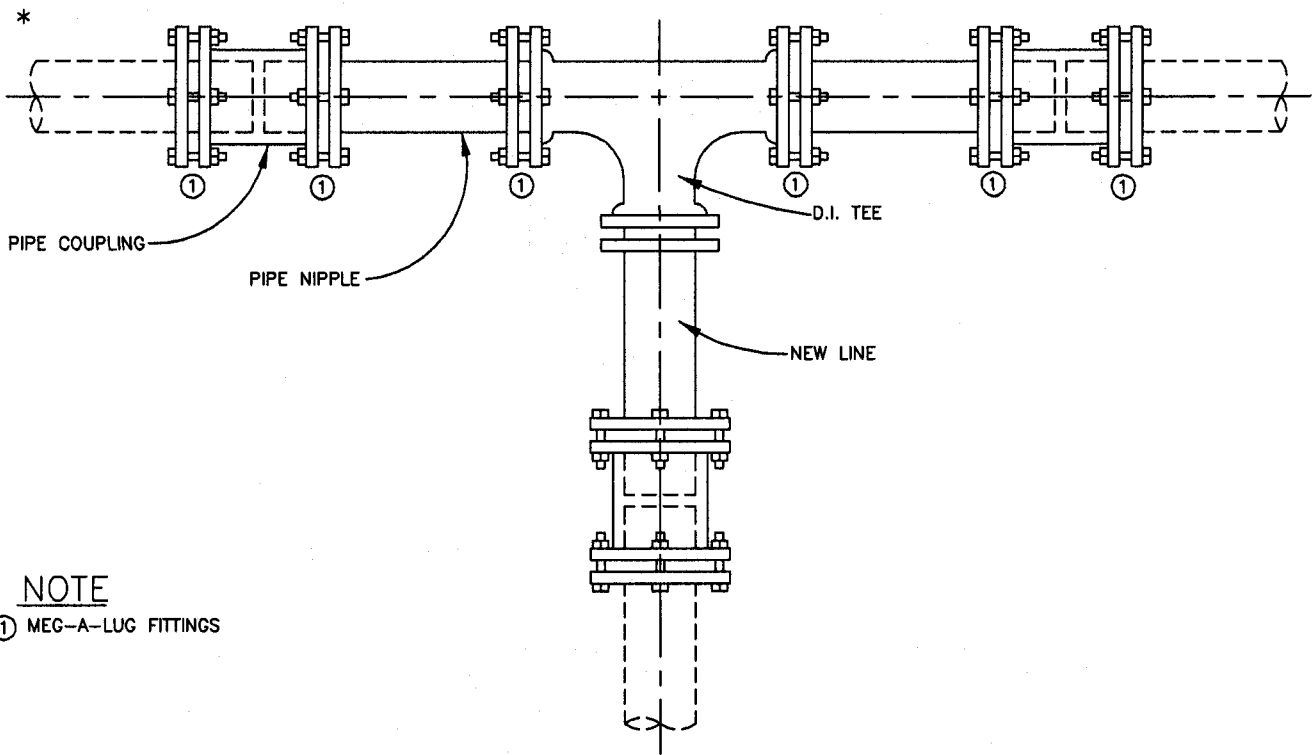
### WATER

<u>SHEET NO.</u>	<u>TITLE</u>
D-201 *	WATER LINE CONNECTION DETAILS (2 SHEETS)
D-203*	VALVE INSTALLATION
D-204 *	PRESSURE REDUCER VALVE/RISER DETAIL (3SHEETS)
D-206	BLOW OFF VALVE ASSEMBLY
D-207 *	FIRE HYDRANT (5 SHEETS)
D-208 *	AIR RELIEF OR VAC VALVE ASSEMBLY-6" THRU 12" PIPE
D-209 *	AIR RELIEF OR VAC VALVE ASSEMBLY-16" PIPE OR LARGER
D-210	THRUST BLOCKS (2 SHEETS)
D-212	WATER LINE LOCATION MARKERS
D-215 *	WATER SERVICE CONNECTION (5/8" METER)
D-216 *	WATER SERVICE CONNECTION (1" METER)
D-217 *	WATER SERVICE CONNECTION (1 1/2" METER)
D-218 *	LARGE WATER METER VAULT DETAIL (2" METER)
D-219 *	LARGE WATER METER VAULT DETAIL (3" METER)
D-220 *	LARGE WATER METER VAULT DETAIL (4" METER)
D-221 *	LARGE WATER METER VAULT DETAIL (6" METER)
D-222 *	LARGE WATER METER VAULT DETAIL (8" METER)
D-224 *	WATER SERVICE MANIFOLD DETAIL

**Note: All Brass Fittings supplied shall meet the new low lead requirements of the U.S. Safe Drinking Water Act, which goes into effect in January 2014.**

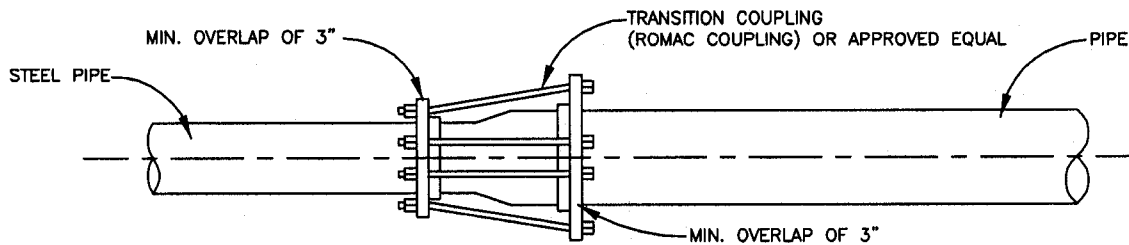
NOTE: \* REVISED 2013/2014

ALL DETAIL SHEETS WERE REVISED TO SAY PUBLIC WORKS



CUTTING TEE INTO EXISTING LINE

**NOTE**  
 ① MEG-A-LUG FITTINGS



CONNECTING UNLIKE PIPE MATERIALS

REV.	DATE
	1/08
*	8/13

**CONSTRUCTION  
STANDARDS**

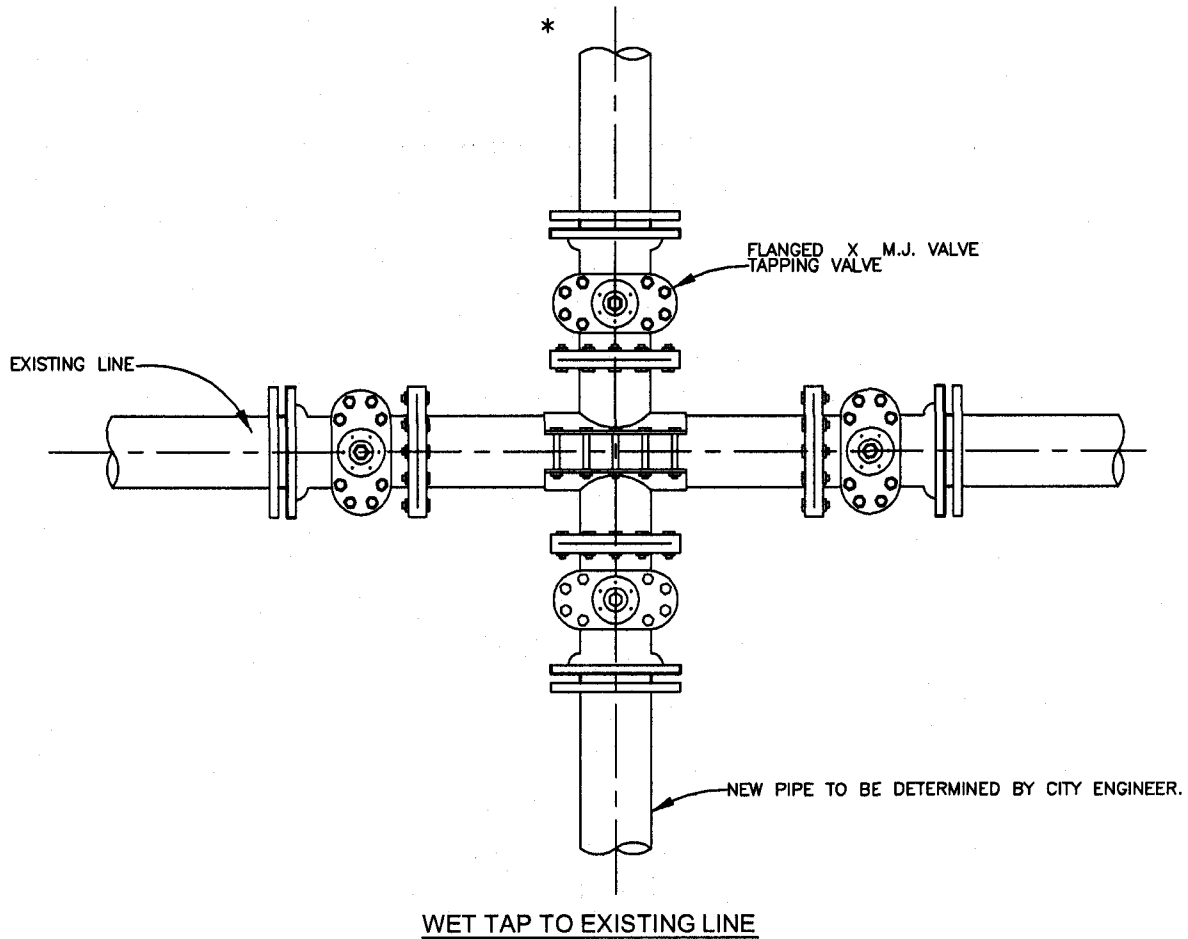
**WATER LINE  
CONNECTION DETAILS**

STANDARD No. D-201 SHEET 1 OF 2

CITY OF  
FARMINGTON

PUBLIC  
WORKS  
DEPARTMENT

APPROVED *[Signature]* DATE 8/27/13



**NOTE**

1. ALL TAP SADDLES OVER 4" SHALL BE TWO PIECE STAINLESS STEEL CAPABLE OF FITTING A/C, DI OR PVC PIPE.

REV.	DATE
*	1/08 8/13

**CONSTRUCTION  
STANDARDS**

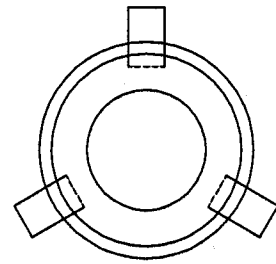
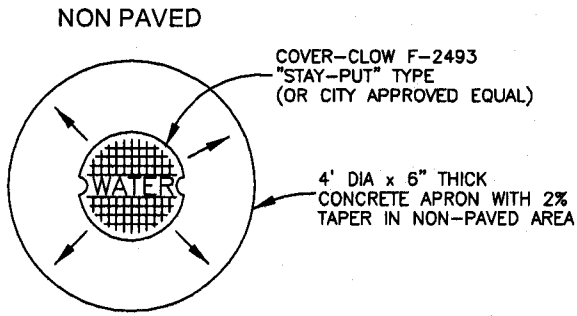
**WATER LINE  
CONNECTION DETAILS**

STANDARD No. D-201 SHEET 2 OF 2

CITY OF  
FARMINGTON

PUBLIC  
WORKS  
DEPARTMENT

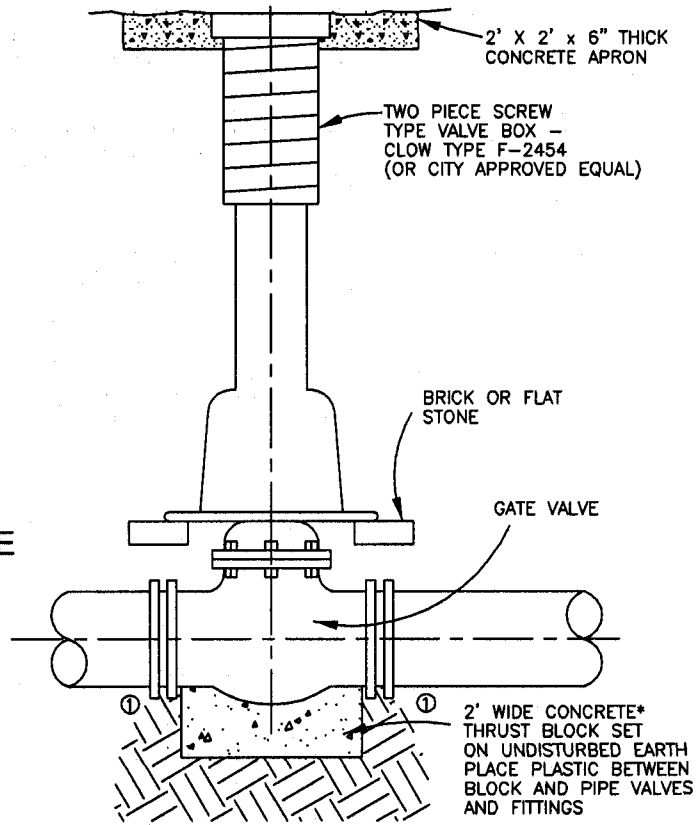
APPROVED *[Signature]* DATE 8/27/13



SET BASE ON BRICK OR FLAT STONE AFTER BACKFILLING PIPE

PLAN

GATE VALVE OR BUTTERFLY VALVE



SECTION

**NOTE:**

- ① 1. MEG-A-LUG WEDGE ACTION JOIST RESTRAINT, SERIES - 1100 FOR CAST IRON OR DUCTILE, SERIES - 1100 PV FOR CAST IRON SIZE PVC (TYPICAL).
- 2. PRE-MIXED CONCRETE BAGS MAY BE USED WITH CITY ENGINEER APPROVAL.

REV.	DATE
	1/08
*	8/13

CONSTRUCTION STANDARDS

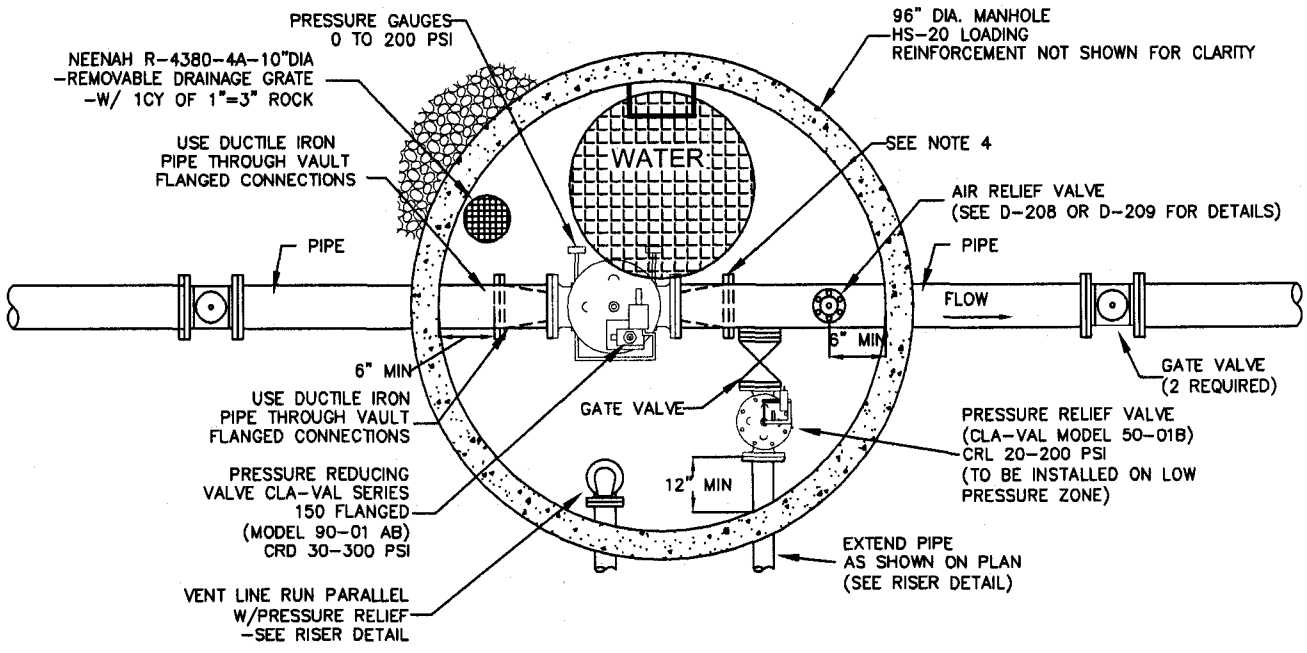
VALVE INSTALLATION

STANDARD No. D-203 SHEET 1 OF 1

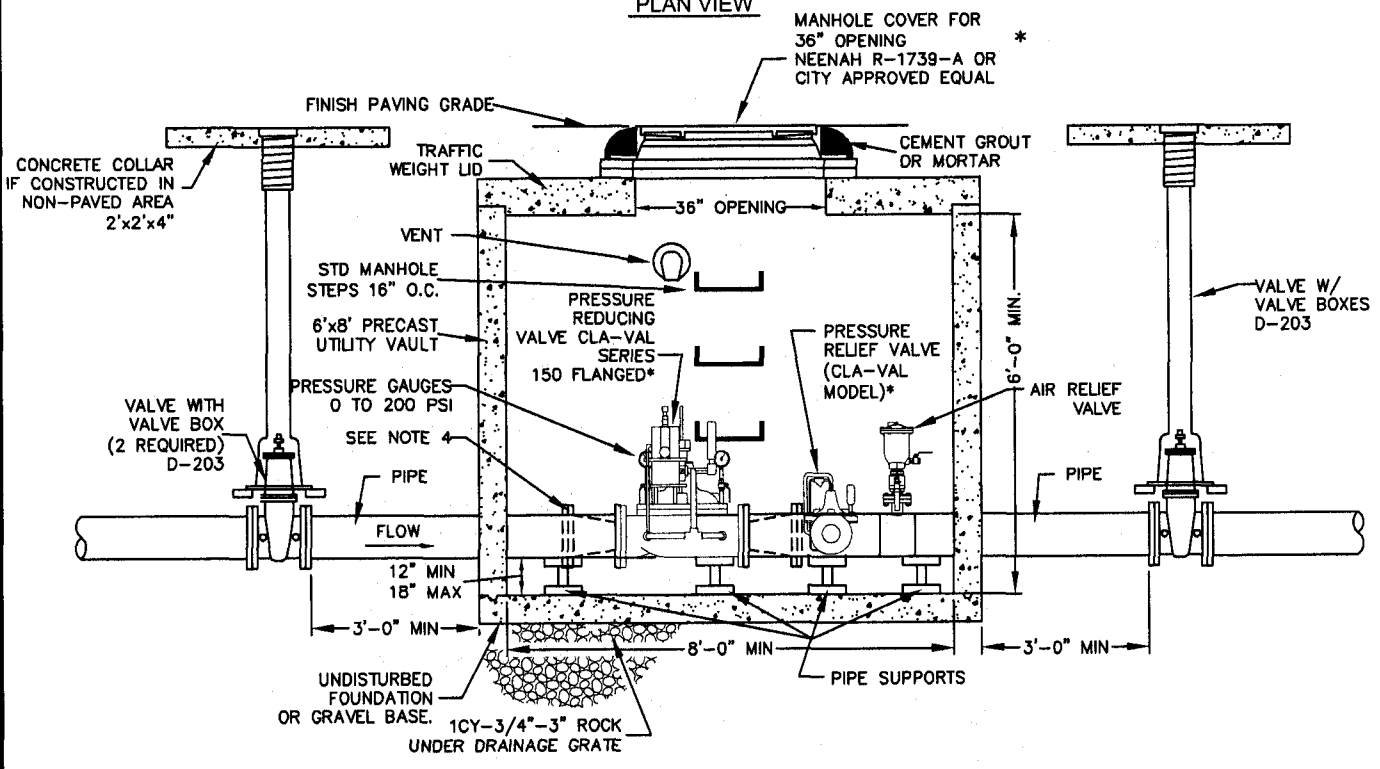
CITY OF FARMINGTON

PUBLIC WORKS DEPARTMENT

APPROVED *[Signature]* DATE 8/27/13



PLAN VIEW



SECTION VIEW

- NOTES:
1. PRECAST MANHOLE SHALL BE DESIGNED FOR HS-20 LOADING.
  2. VALVES SHALL BE CAL-VAL ONLY NO SUBSTITUTIONS WILL BE ALLOWED.
  3. THE GATE VALVE SERVING THE PRESSURE RELIEF VALVE SHALL BOTH MATCH IN SIZE.
  4. IF THE PROPOSED PRV IS SMALLER THAN THE LINE SIZE, THEN REDUCERS ARE REQUIRED IMMEDIATELY BEFORE AND AFTER THE PRV INSIDE THE VAULT.

PRV MATRIX		
VALVE SIZE	PRESSURE RELEIF SIZE	BLOW OFF AND VENT PIPE SIZE
8"	4"	4"
10"	4"	6"
12"	6"	6"

REV.	DATE
*	1/08 8/13

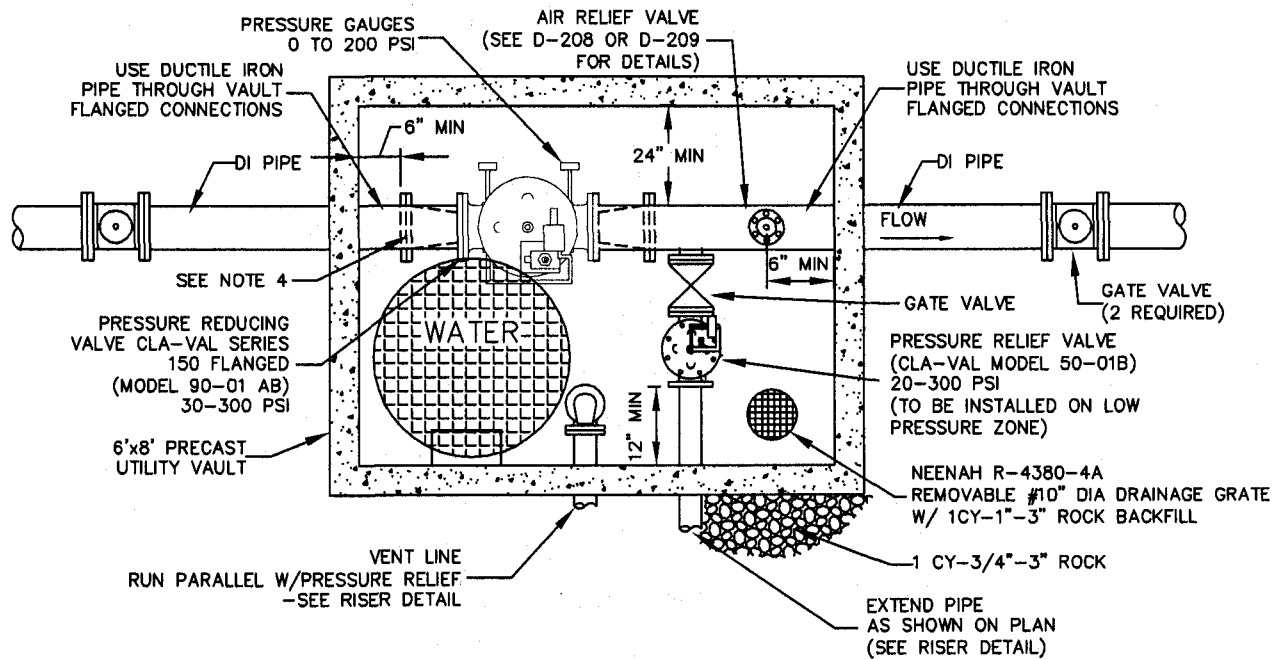
CONSTRUCTION STANDARDS

PRESSURE REDUCER VALVE ASSEMBLY PRE-CAST MANHOLE

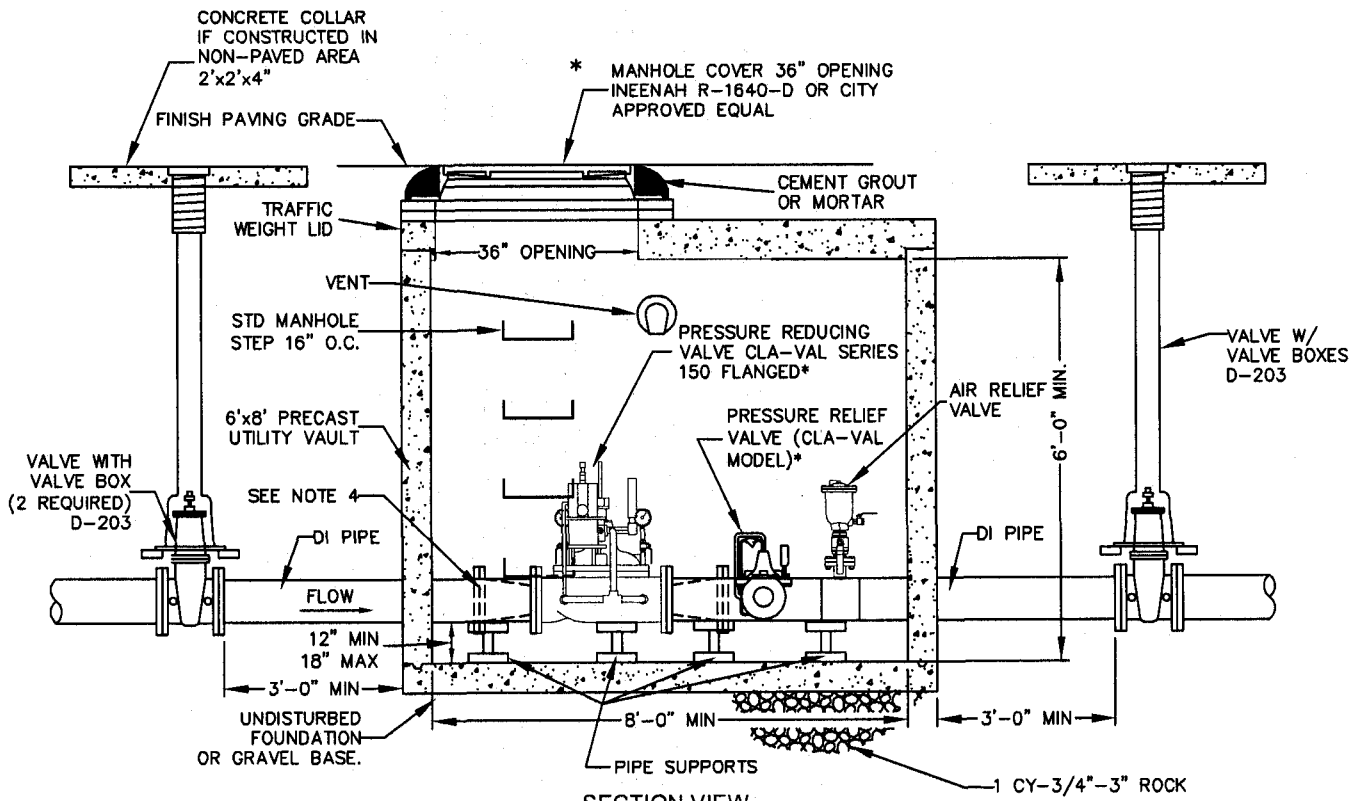
STANDARD No. D-204 SHEET 1 OF 3

CITY OF FARMINGTON  
PUBLIC WORKS DEPARTMENT

APPROVED *[Signature]* DATE 8/27/13



PLAN VIEW



SECTION VIEW

- NOTES:
1. PRECAST MANHOLE SHALL BE DESIGNED FOR HS-20 LOADING.
  2. VALVES SHALL BE CAL-VAL ONLY-NO SUBSTITUTIONS WILL BE ALLOWED.
  3. THE GATE VALVE SERVING THE PRESSURE RELIEF VALVE SHALL BOTH MATCH IN SIZE.
  4. IF THE PROPOSED PRV IS SMALLER THAN THE LINE SIZE, THEN REDUCERS ARE REQUIRED IMMEDIATELY BEFORE AND AFTER THE PRV INSIDE THE VAULT.

PRV MATRIX *		
VALVE SIZE	PRESSURE RELIEF SIZE	BLOW OFF AND VENT PIPE SIZE
8"	4"	4"
10"	4"	6"
12"	6"	6"

REV.	DATE
*	1/08 8/13

CONSTRUCTION STANDARDS

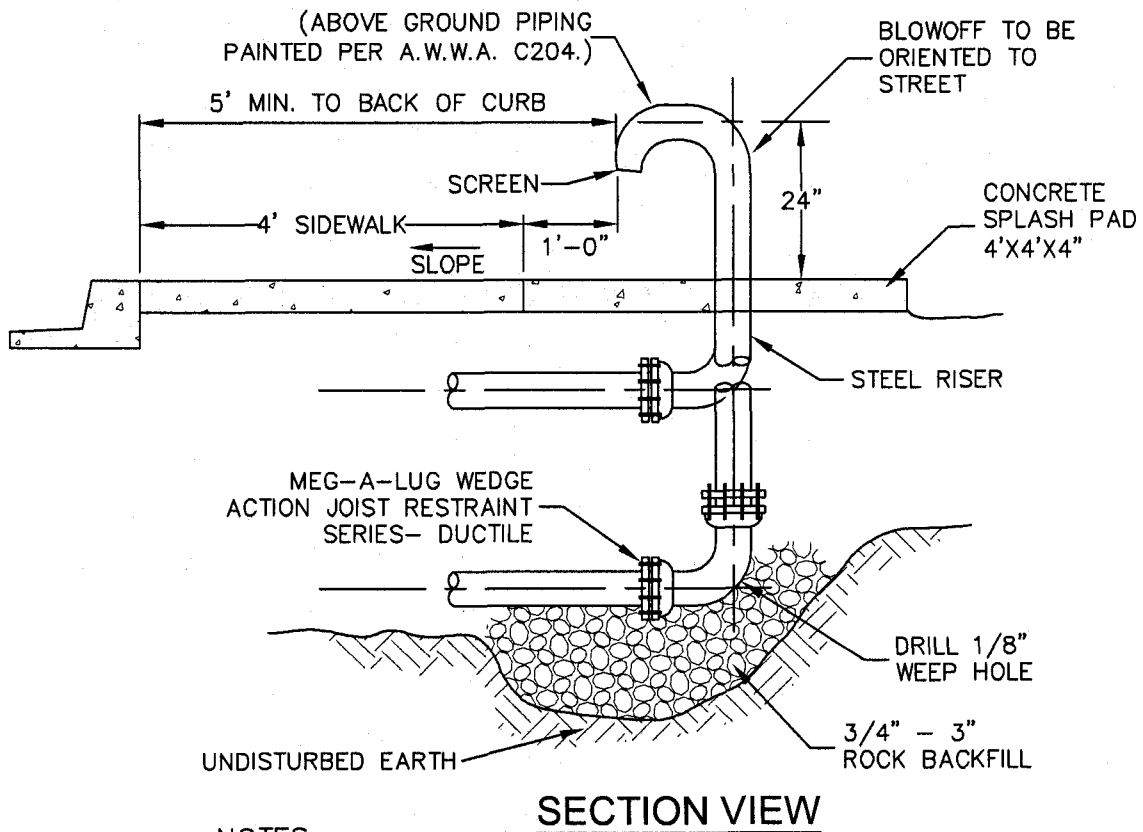
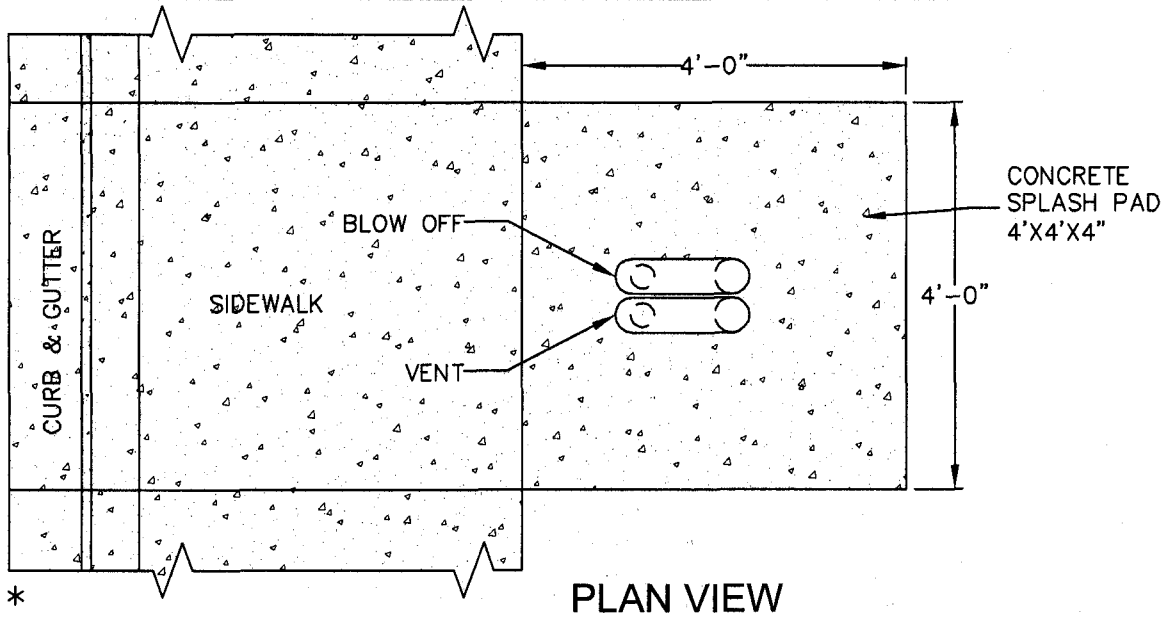
PRESSURE REDUCER VALVE ASSEMBLY PRE-CAST VAULT

STANDARD No. D-204 SHEET 2 OF 3

CITY OF FARMINGTON

PUBLIC WORKS DEPARTMENT

APPROVED *[Signature]* DATE 8/27/13



NOTES:

- \* 1. SEE D-204 FOR THE PRV MATRIX TABLE FOR BLOW OFF AND VENT PIPE SIZING.
- 2. BLOW OFF PIPE AND VENT LOCATION TYPICAL 1ft BEHIND SIDEWALK
- 3. MINIMUM 10ft HORIZONTAL SEPARATION FROM THE VAULT FOR BIDDING PURPOSES.
- \* 4. LOCATION OF THE BLOW OFF AND VENT PIPES SHALL BE FIELD DETERMINED IN THE FIELD BY THE CITY.

REV.	DATE
*	1/08 8/13

CONSTRUCTION  
STANDARDS

BLOW OFF  
& VENT PIPE DETAIL

STANDARD No. D-204 SHEET 3 OF 3

CITY OF  
FARMINGTON

PUBLIC  
WORKS  
DEPARTMENT

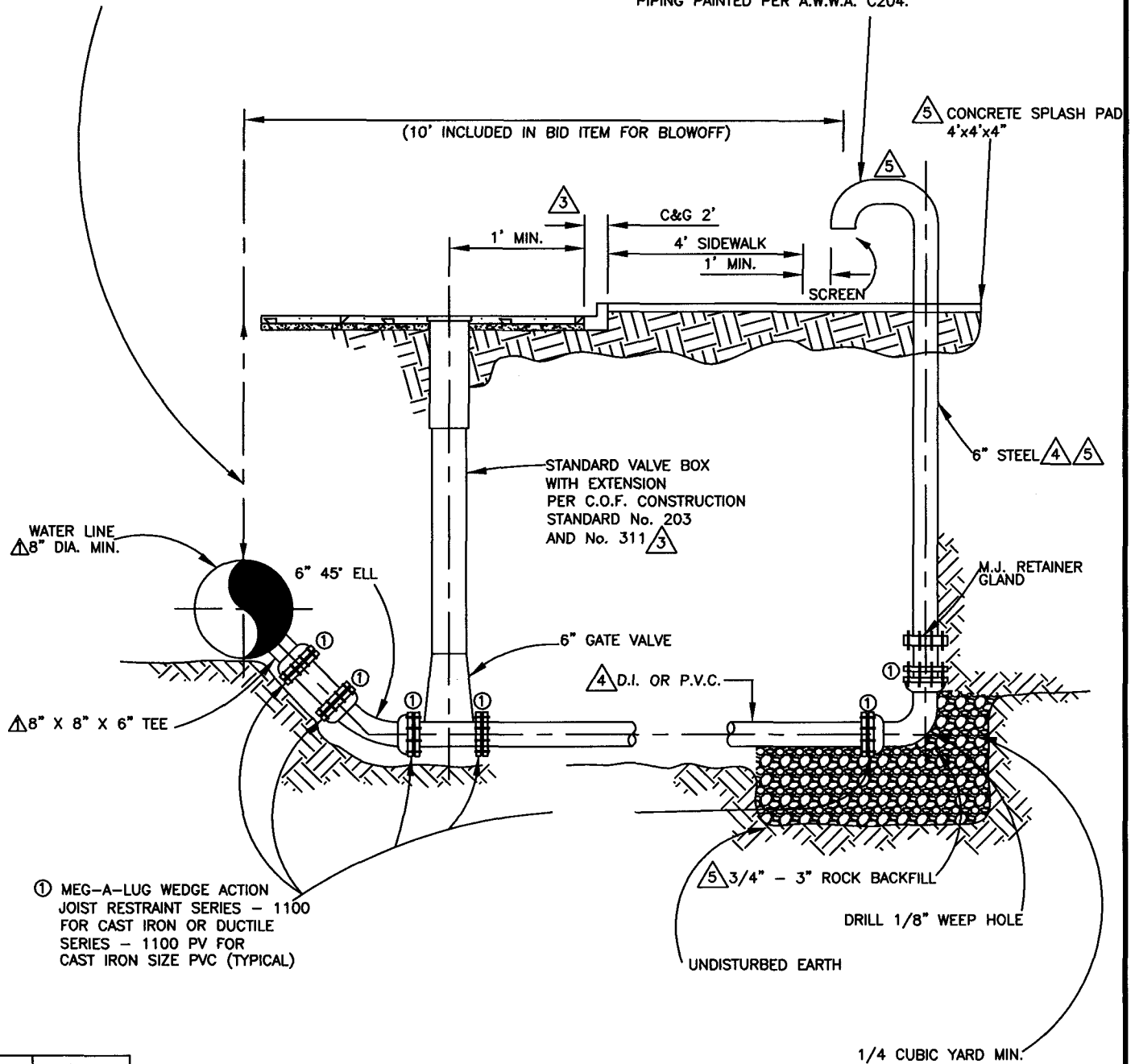
APPROVED *[Signature]* DATE 8/27/13



**NOTE**

MINIMUM DEPTH OF COVER OVER WATER LINE - 42"

6" FLEXIBLE 180° ELBOW ABOVE GROUND PIPING PAINTED PER A.W.W.A. C204.



REV.	DATE
①	3/1/96
②	12/31/97
③	11/19/04
④	12/02/05
⑤	1/22/08

**CONSTRUCTION STANDARDS**

**BLOW OFF VALVE ASSEMBLY DETAIL**

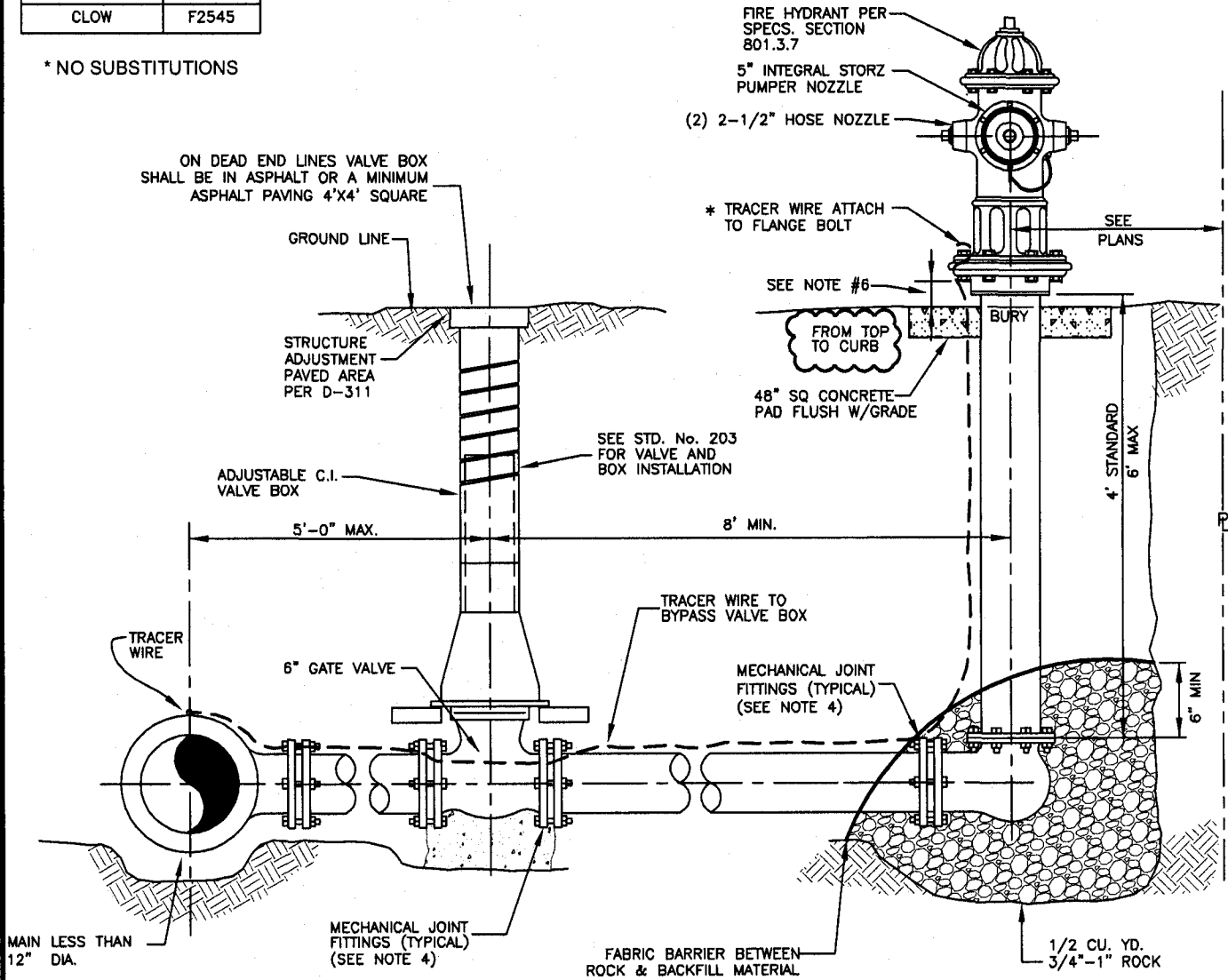
STANDARD No. D-206 SHEET 1 OF 1

CITY OF FARMINGTON  
PUBLIC WORKS DEPARTMENT

APPROVED *[Signature]* DATE 4/15/08

FIRE HYDRANT W/ INTEGRAL STORZ	
MANUFACTURER*	MODEL
M&H	129
MUELLER	A425
KENNEDY	K-81A
CLOW	F2545

\* NO SUBSTITUTIONS



- NOTES:**
1. SEE SECTION 801.3.7 - FIRE HYDRANT SPECIFICATION.
  2. ORIENTATION OF NOZZLES AS SPECIFIED.
  3. NO STORZ ADAPTER CONNECTION ALLOWED ONTO PUMPER NOZZLE.
  4. MEG-A-LUG WEDGE ACTION JOINT RESTRAINT, SERIES - 1100 FOR CAST IRON OR DUCTILE, SERIES - 2000 PV FOR CAST IRON SIZE PVC.
  5. HYDRANT BURY 6" PIPE.
  6. CLEARANCE FROM TOP OF CONCRETE PAD TO BOTTOM OF SHEER BOLT- 3" MIN. 6" MAX.
  - \* 7. TRACER WIRE TO BE ATTACHED TO FLANGE BOLT.

REV	DATE
	1/08
*	8/13

**CONSTRUCTION  
STANDARDS**

**STANDARD  
FIRE HYDRANT**

STANDARD No. D-207 SHEET 1 OF 5

CITY OF  
FARMINGTON  

---

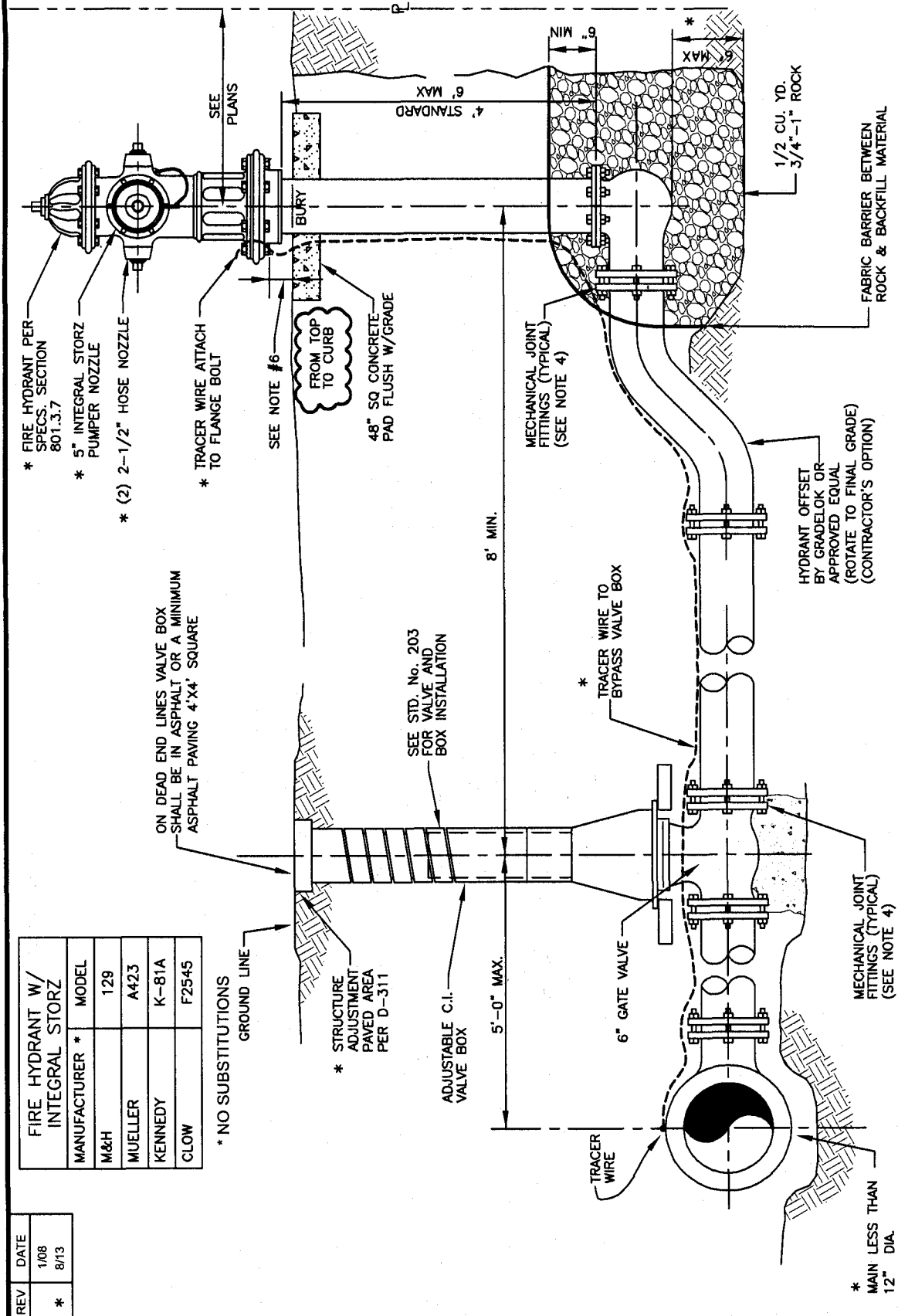
PUBLIC  
WORKS  
DEPARTMENT

APPROVED *[Signature]* DATE 8/27/13

REV	DATE
*	1/08 8/13

FIRE HYDRANT W/ INTEGRAL STORZ	MANUFACTURER *	MODEL
	M&H	129
	MUELLER	A423
	KENNEDY	K-81A
	CLOW	F2545

\* NO SUBSTITUTIONS



- NOTES:**
1. SEE SECTION 801.3.7 - FIRE HYDRANT SPECIFICATION.
  2. ORIENTATION OF NOZZLES AS SPECIFIED.
  3. NO STORZ ADAPTER CONNECTION ALLOWED ONTO PUMPER NOZZLE.
  4. MEG-A-LUG WEDGE ACTION JOINT RESTRAINT, SERIES - 1100 FOR CAST IRON OR DUCTILE, SERIES - 2000 PV FOR CAST IRON SIZE PVC.
  5. HYDRANT BURY 6" PIPE.
  6. CLEARANCE FROM TOP OF CONCRETE PAD TO BOTTOM OF SHEER BOLT - 3" MIN. 6" MAX
  7. TRACER WIRE TO BE ATTACHED TO FLANGE BLOT.

**CONSTRUCTION STANDARDS**

**FIRE HYDRANT (OPTIONAL OFFSET)**

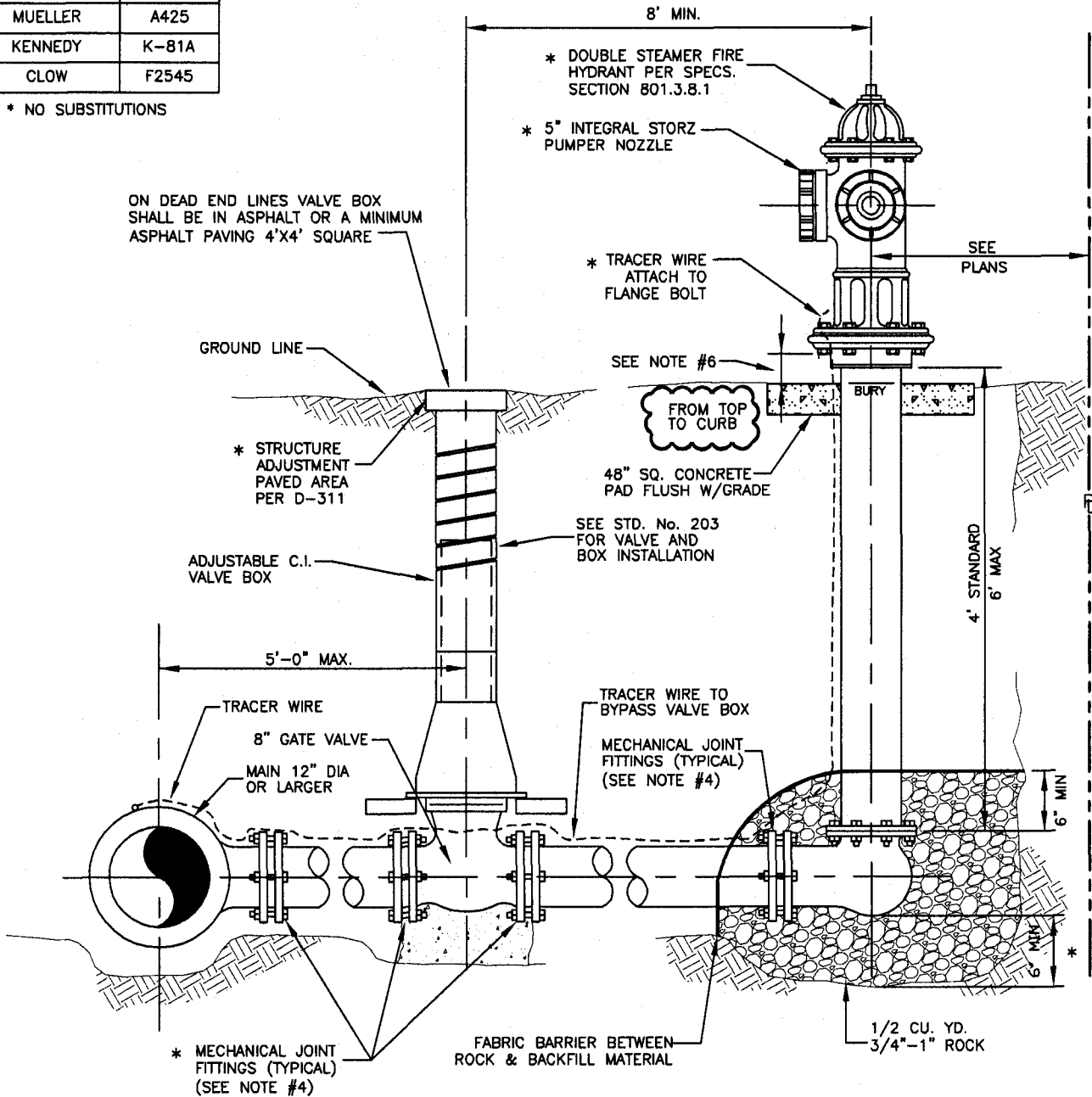
STANDARD No. D-207 SHEET 2 OF 5

CITY OF FARMINGTON  
PUBLIC WORKS DEPARTMENT

APPROVED *[Signature]* DATE 8/27/13

FIRE HYDRANT W/ INTEGRAL STORZ	
MANUFACTURER*	MODEL
M&H	129
MUELLER	A425
KENNEDY	K-81A
CLOW	F2545

\* NO SUBSTITUTIONS



**NOTES:**

1. SEE SECTION 801.3.7 - FIRE HYDRANT SPECIFICATION.
2. ORIENTATION OF NOZZLES AS SPECIFIED.
3. NO STORZ ADAPTER CONNECTION ALLOWED ONTO PUMPER NOZZLE.
4. MEG-A-LUG WEDGE ACTION JOINT RESTRAINT, SERIES - 1100 FOR CAST IRON OR DUCTILE, SERIES - 2000 PV FOR CAST IRON SIZE PVC.
5. HYDRANT BURY 8" PIPE.
6. CLEARANCE FROM TOP OF CONCRETE PAD TO BOTTOM OF SHEER BOLT - 3" MIN. 6" MAX.
- \* 7. TRACER WIRE TO BE ATTACHED TO FLANGE BOLT.

REV.	DATE
*	1/08 8/13

CONSTRUCTION  
STANDARDS

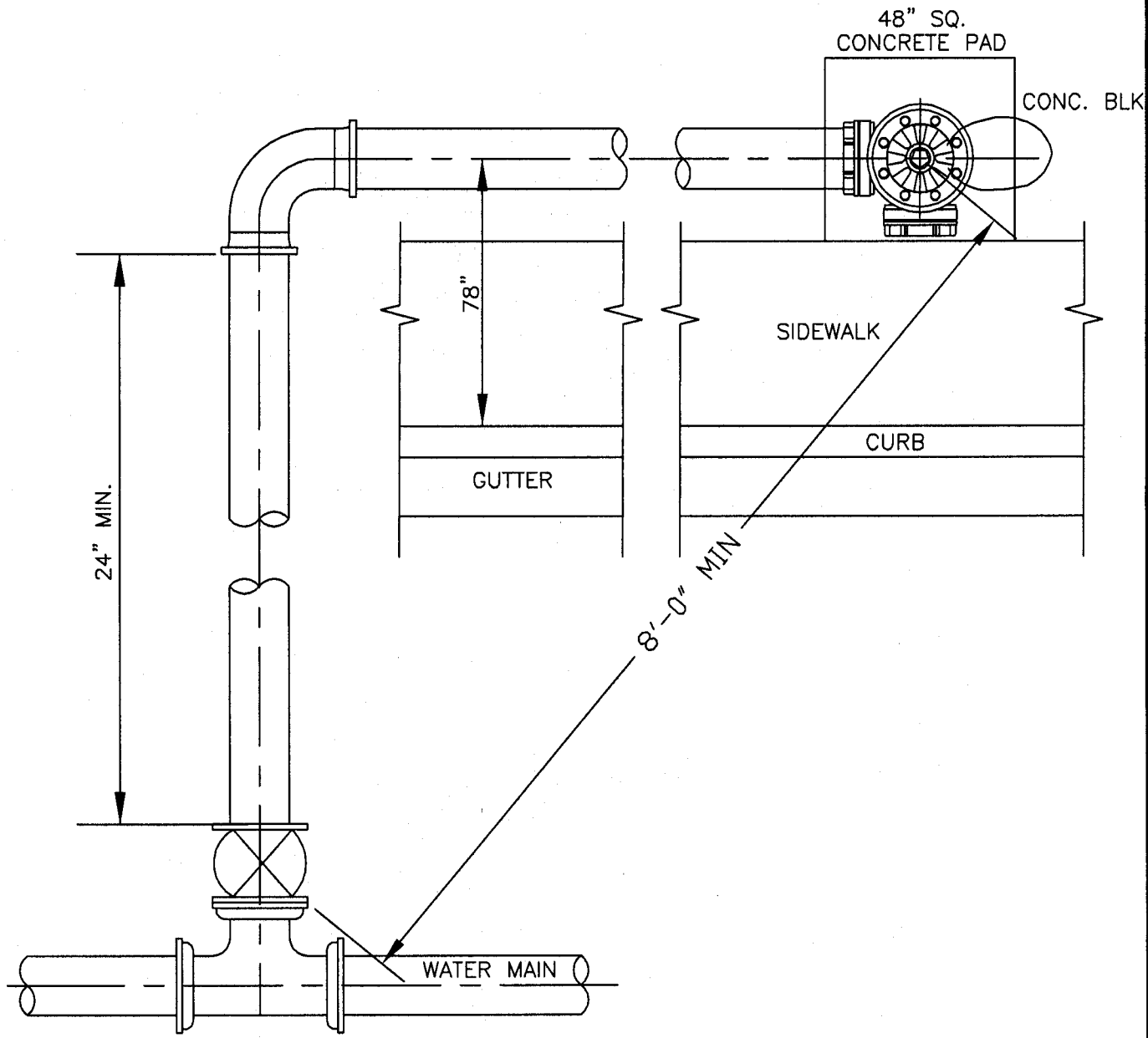
DOUBLE STEAMER  
FIRE HYDRANT

STANDARD No. D-207 SHEET 3 OF 5

CITY OF  
FARMINGTON

PUBLIC  
WORKS  
DEPARTMENT

APPROVED *[Signature]* DATE 8/27/13



- NOTE:
1. MINIMUM DIRECT DISTANCE FIRE HYDRANT TO GATE VALVE SHALL BE 8'-0".
  2. ALL JOINTS SHALL BE MEGA-LUGS.
  3. LUBRICATE HYDRANT NOZZLE THREADS WITH NON-TOXIC GREASE.
  4. NON FLANGED FIRE HYDRANT JOINTS REQUIRE MEG-A-LUG OR APPROVED EQUAL.

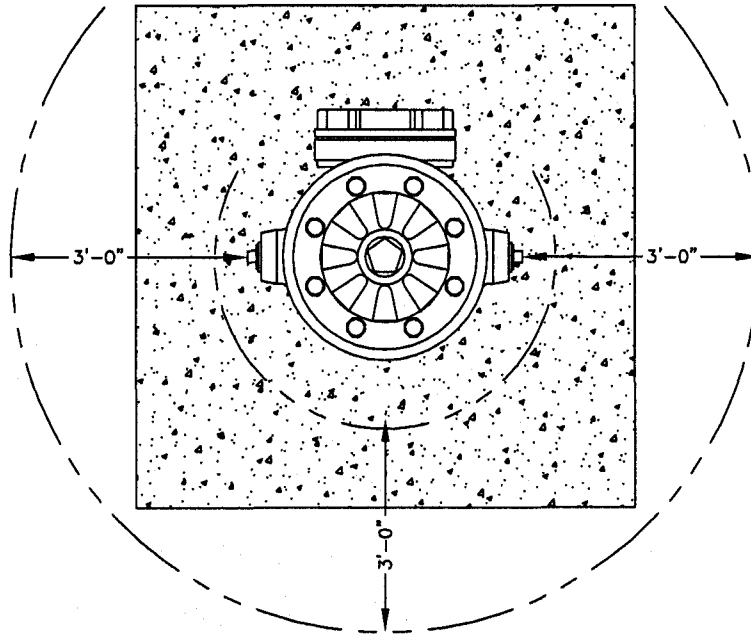
REV.	DATE
	1/08
*	8/13

<p><b>CONSTRUCTION STANDARDS</b></p>	<p><b>FIRE HYDRANT OFFSET ALTERNATE</b></p> <p>STANDARD No. D-207      SHEET 4 OF 5</p>	<p>CITY OF FARMINGTON</p> <hr/> <p>PUBLIC WORKS DEPARTMENT</p>
--------------------------------------	---	--

APPROVED *[Signature]* DATE 8/27/13

STREET/BUILDING SIDE  
MUST REMAIN OPEN AND CLEAR

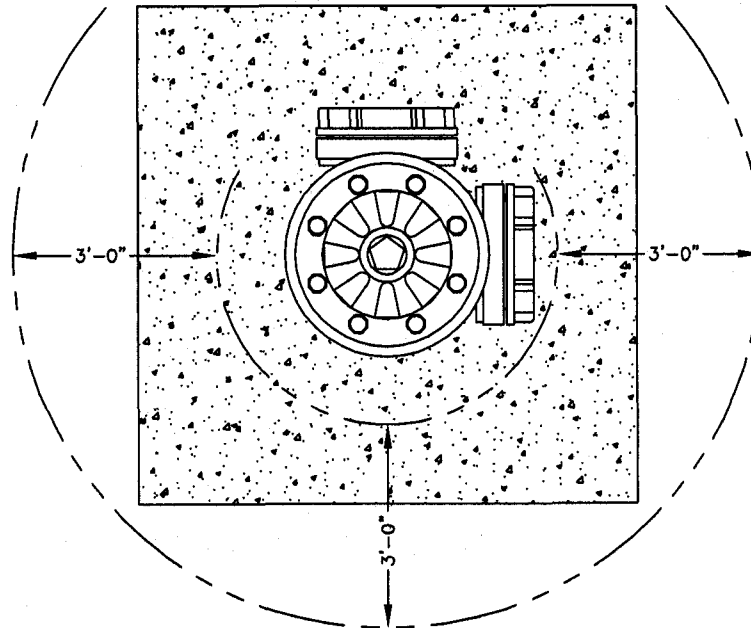
48" SQ. CONCRETE PAD



STANDARD HYDRANT TOP VIEW

STREET/BUILDING SIDE  
MUST REMAIN OPEN AND CLEAR

48" SQ. CONCRETE PAD



DOUBLE STEAMER TOP VIEW

REV.	DATE
	1/08
*	8/13

CONSTRUCTION  
STANDARDS

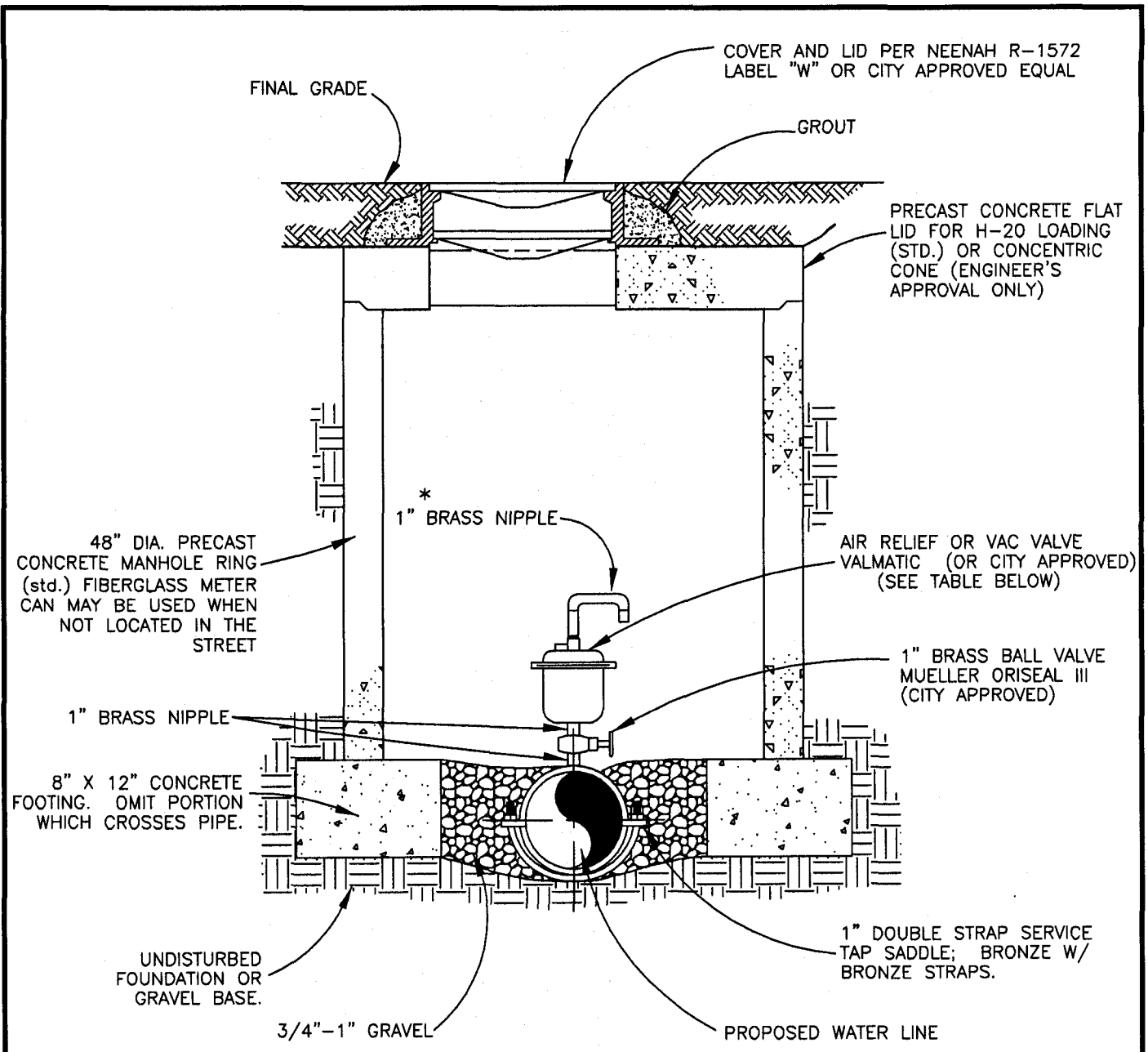
FIRE HYDRANT (TOP VIEW)

STANDARD No. D-207 SHEET 5 OF 5

CITY OF  
FARMINGTON

PUBLIC  
WORKS  
DEPARTMENT

APPROVED *M/Walt* DATE 8/27/13



AIR RELIEF OR VAC VALVE DATA				
WATERLINE DIAMETER	INLET SIZE N.P.T.	OUTLET SIZE N.P.T.	ORIFICE SIZE	VALMATIC MODEL NO.
6" OR UNDER	1"	3/8"	1/16"	15
8"	1"	1/2"	3/32"	22
10"	1"	1/2"	3/32"	22
12"	1"	1/2"	1/8"	25

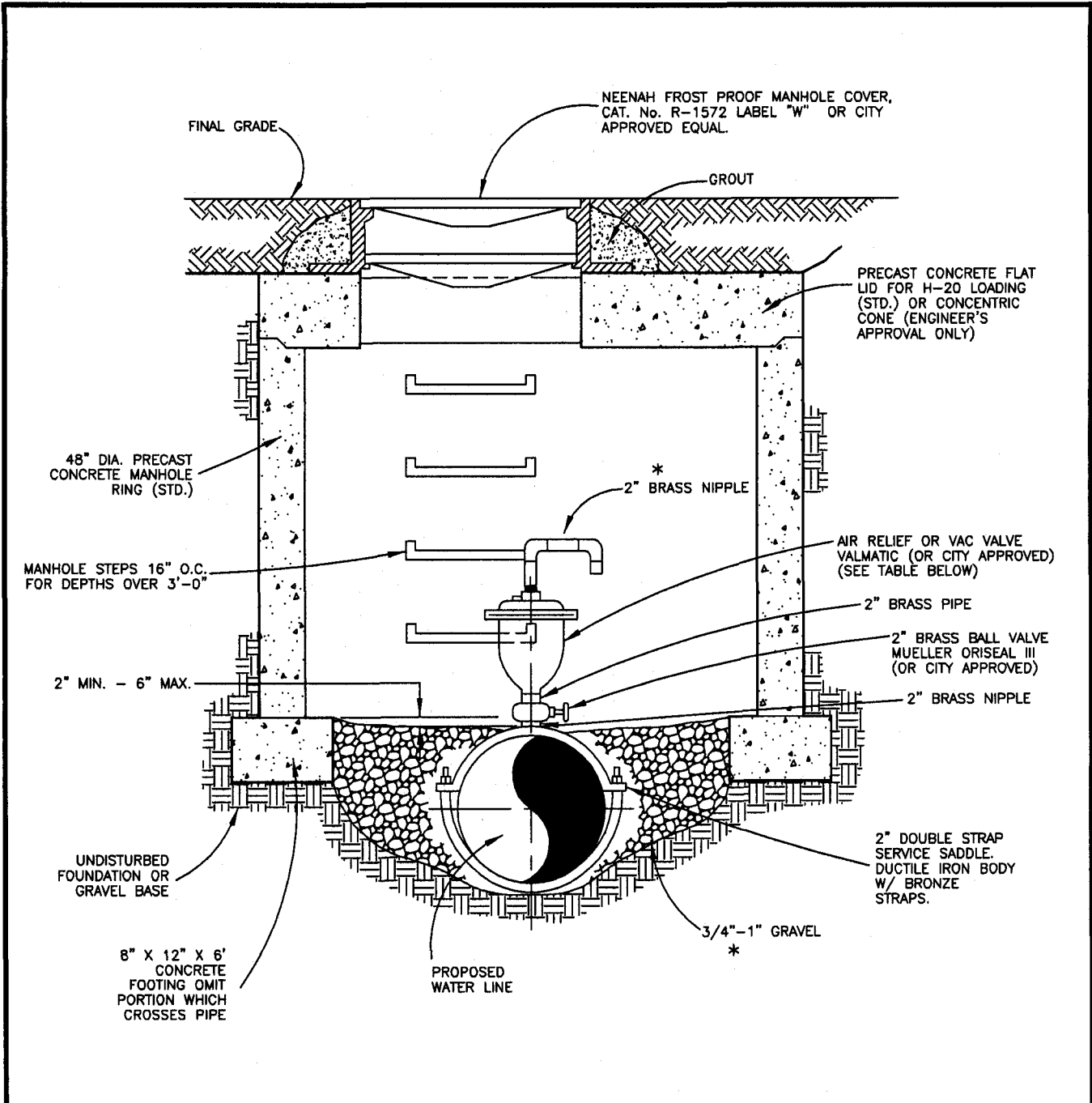
REV.	DATE
	1/08
*	8/13

**CONSTRUCTION STANDARDS**

**AIR RELIEF OR VAC VALVE ASSEMBLY**  
 6" THRU 12" PIPE  
 STANDARD No. D-208 SHEET 1 OF 1

CITY OF FARMINGTON  
 PUBLIC WORKS DEPARTMENT

APPROVED *[Signature]* DATE 8/27/13



\* AIR RELIEF OR VAC VALVE DATA

WATERLINE DIAMETER	INLET SIZE N.P.T.	OUTLET SIZE N.P.T.	ORIFICE SIZE	VALMATIC MODEL NO.
16"	2"	1/2"	3/16"	38
24"	2"	1/2"	3/16"	38
OVER 24"	AS DIRECTED BY ENGINEER.			

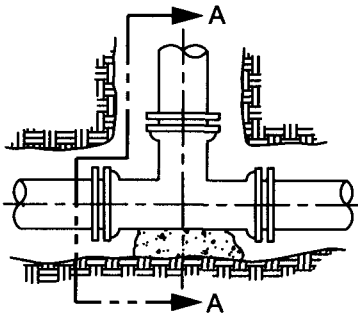
REV.	DATE
	1/08
*	8/13

<p><b>CONSTRUCTION STANDARDS</b></p>	<p><b>AIR RELIEF OR VAC VALVE ASSEMBLY</b> 16" PIPE OR LARGER</p> <p>STANDARD No. D-209 SHEET 1 OF 1</p>	<p>CITY OF FARMINGTON</p> <hr/> <p>PUBLIC WORKS DEPARTMENT</p>
--------------------------------------	--	--

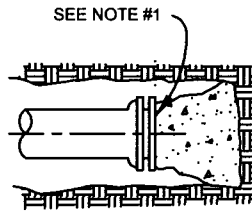
APPROVED *[Signature]* DATE 8/27/13



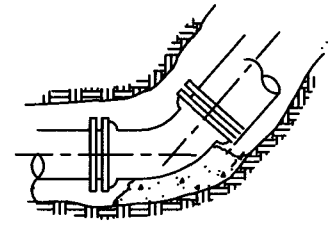
# MEG-A-LUGS ARE REQUIRED UNLESS APPROVED BY WATER & WASTEWATER ADMINISTRATOR $\Delta$



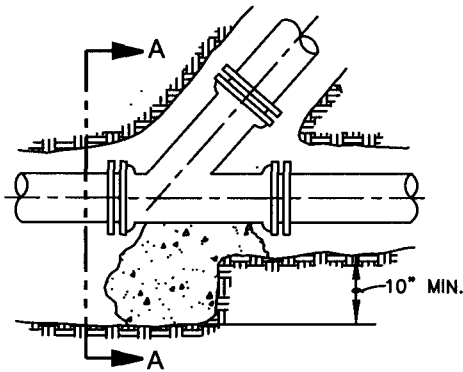
TEE



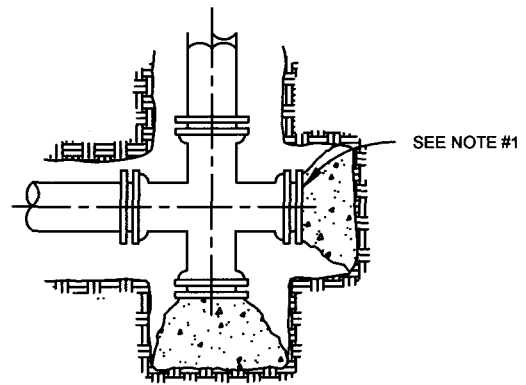
DEAD END



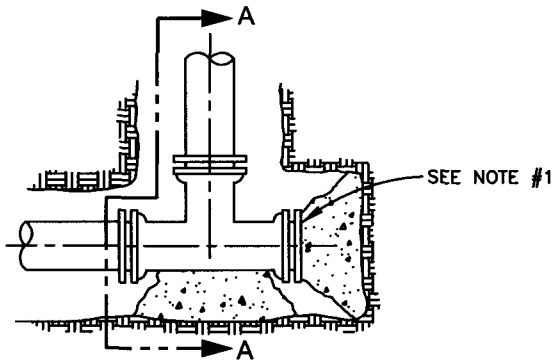
BEND HORIZONTAL OR BOTTOM OF VERTICAL



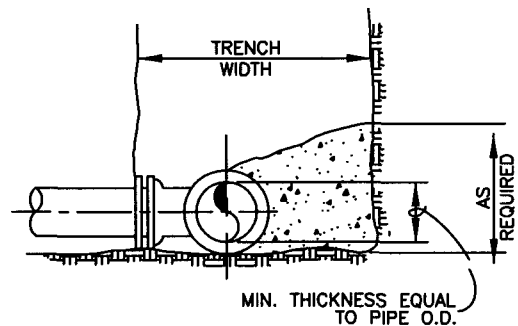
WYE



CROSS W/ DEAD END BRANCH



TEE W/ DEAD END BRANCH



SECTION A-A

**NOTES**

1. AT DEAD ENDS, WRAP FITTINGS WITH TAR PAPER, FELT, PLASTIC ETC. TO PROVIDE BOND BREAK BETWEEN CONCRETE AND FITTINGS
2. ALL THRUST BLOCKING SHALL BE CAST-IN-PLACE CONCRETE HAVING A MINIMUM YIELD STRENGTH OF 2000 P.S.I.
3. THRUST BLOCKING SHALL BE CAST AGAINST UNDISTURBED EARTH. FORMS SHALL BE USED AS REQUIRED TO OBTAIN ADEQUATE BEARING AREA AND TO CONFINE THE CONCRETE THRUST BLOCKING SHALL BEAR ON THE FITTING OR END CAP ONLY AND SHOULD NOT BE ALLOWED TO SPILL OVER THE JOINT OR AGAINST THE PIPE.

REV.	DATE
$\Delta$	1/22/08

**CONSTRUCTION STANDARDS**

**THRUST BLOCKS ONLY WITH APPROVAL  $\Delta$**

STANDARD No. D-210 SHEET 1 OF 2

CITY OF FARMINGTON

PUBLIC WORKS DEPARTMENT

APPROVED *[Signature]* DATE 4/15/08

**MEG-A-LUGS ARE REQUIRED UNLESS APPROVED BY WATER & WASTEWATER ADMINISTRATOR**  
**TABLE OF BEARING AREAS IN SQ. FT FOR CONCRETE**  
**THRUST BLOCKING**



FOR 150 P.S.I. INTERNAL STATIC PRESSURE AND 2000 LBS. PER SQ. FT SOIL BEARING CAPACITY.

PIPE SIZE	BENDS				TEES	PLUGS
	90°	45°	22 1/2°	11 1/4°		
4	1.50	0.75	0.50	0.0	1.00	1.00
6	3.00	1.75	1.00	0.0	2.25	2.25
8	5.50	3.00	1.50	1.00	3.75	3.75
10	8.50	4.50	2.50	1.50	6.00	6.00
12	12.00	6.50	3.50	1.75	8.50	8.50
14	16.50	9.00	4.50	2.25	11.50	11.50
16	21.50	11.50	6.00	3.00	15.00	15.00
18	27.00	14.75	7.50	3.75	19.00	19.00
20	33.50	18.00	9.25	4.75	23.50	23.50
24	48.00	26.00	13.25	6.75	34.00	34.00
30	75.25	40.75	20.75	10.50	53.00	53.00
36	108.25	58.50	30.00	15.00	76.50	76.50

AREAS GIVEN IN TABLE ARE BASED UPON AN INTERNAL STATIC PRESSURE OF 150 P.S.I. AND A SOIL BEARING CAPACITY OF 2000 LBS. PER SQ. FT. BEARING AREAS FOR ANY PRESSURE AND SOIL BEARING CAPACITY MAY BE OBTAINED BY MULTIPLYING THE TABULATED VALUES BY A CORRECTION FACTOR "F".

$$F = \frac{\text{ACTUAL SPECIFIED TEST PRESSURE IN HUNDREDS OF LBS.}}{\text{ACTUAL SOIL BEARING CAPACITY IN THOUSANDS OF LBS.}}$$

EXAMPLE: TO FIND BEARING AREA FOR 8" - 90° BEND WITH A STATIC INTERNAL PRESSURE OF 100 P.S.I. AND WITH A SOIL BEARING CAPACITY OF 3000 LBS. PER SQ. FT.

$$F = 1 \div 3 = .33 \text{ TABULATED VALUE} = 550 \text{ SQ. FT.}$$

$$0.33 \times 550 = 1.82 \text{ SAY } 2 \text{ SQ. FT. OR } 2 \text{ FT. LONG BY } 1 \text{ FT. HIGH}$$

REV.	DATE
△	1/22/08

**CONSTRUCTION STANDARDS**

**THRUST BLOCKS**

STANDARD No. D-210 SHEET 2 OF 2

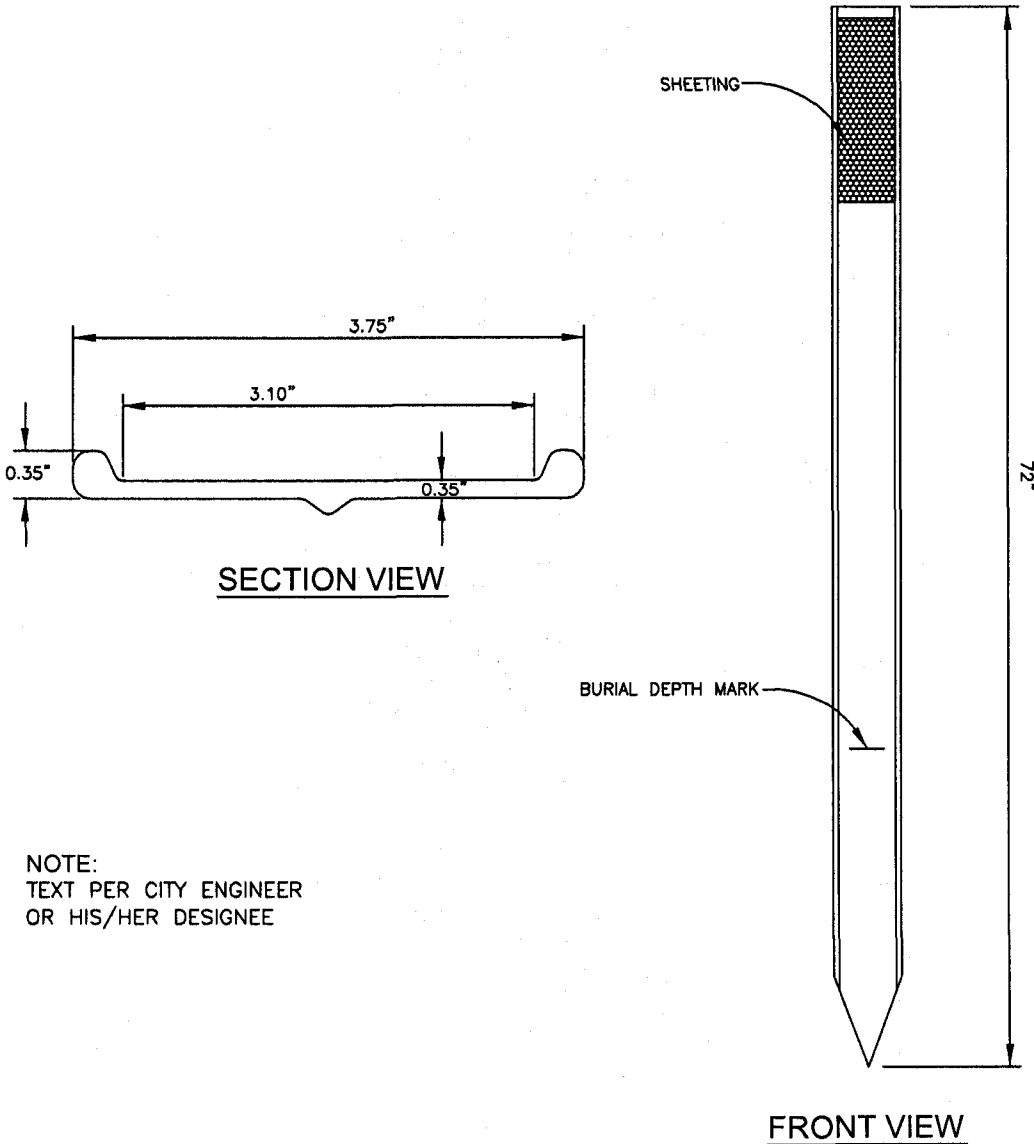
CITY OF FARMINGTON

PUBLIC WORKS DEPARTMENT

APPROVED M. J. [Signature] DATE 4/15/08

# FIBERGLASS POST DETAIL

CARSONITE CUM-375  
OR APPROVED EQUAL



NOTE:  
TEXT PER CITY ENGINEER  
OR HIS/HER DESIGNEE

REV.	DATE
*	1/08 8/13

**CONSTRUCTION  
STANDARDS**

**STATIONARY WATER LINE  
LOCATION MARKER**

STANDARD No. D-212 SHEET 1 OF 1

CITY OF  
FARMINGTON

PUBLIC  
WORKS  
DEPARTMENT

APPROVED *M. West* DATE 8/27/13

REV.	DATE
*	1/08 8/13

# CONSTRUCTION STANDARDS

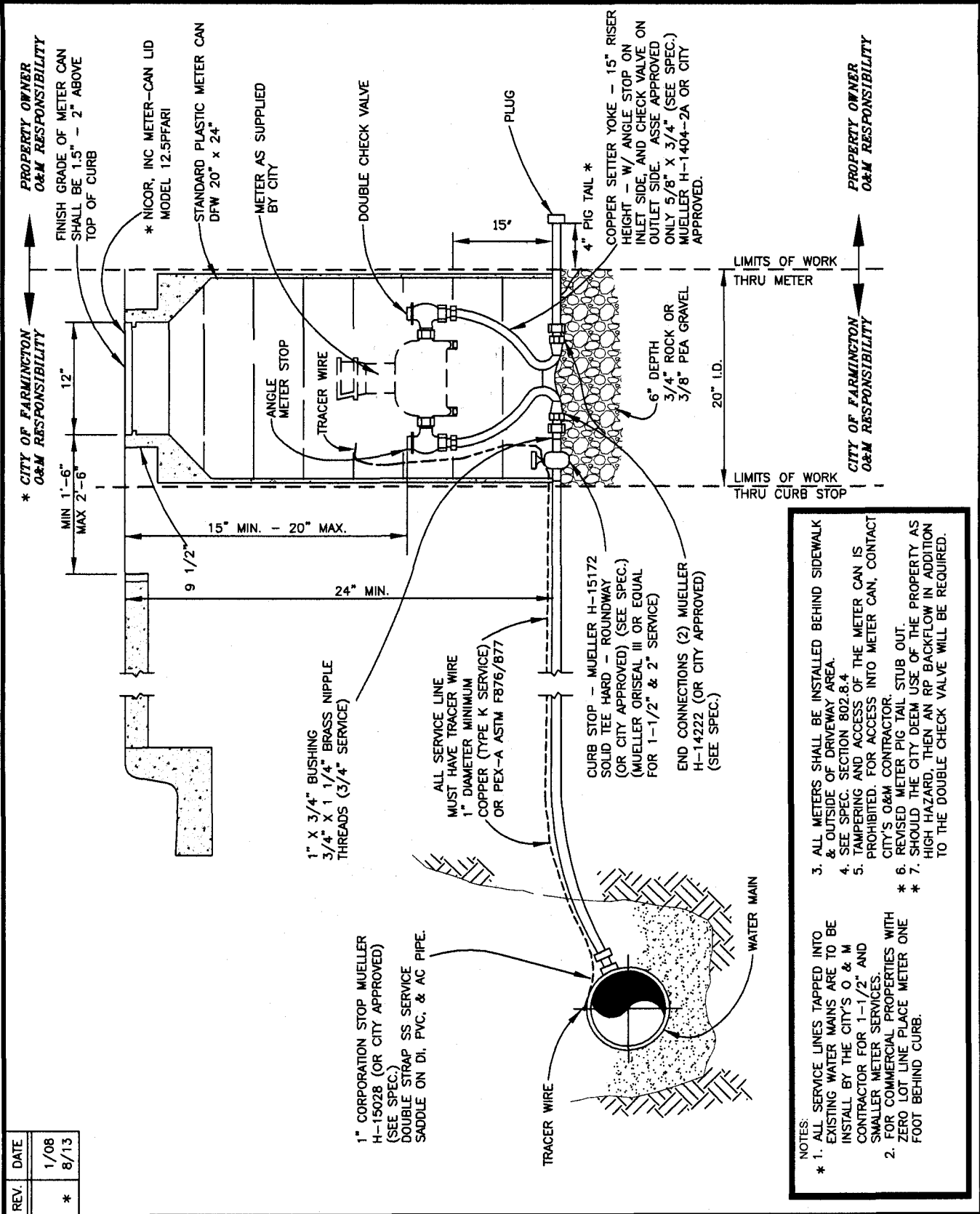
# WATER SERVICE CONNECTION 5/8" METER

STANDARD No. D-215 SHEET 1 OF 1

CITY OF FARMINGTON

PUBLIC WORKS DEPARTMENT

APPROVED *[Signature]* DATE 8/27/13



- NOTES:
1. ALL SERVICE LINES TAPPED INTO EXISTING WATER MAINS ARE TO BE INSTALLED BY THE CITY'S O & M CONTRACTOR FOR 1-1/2" AND SMALLER METER SERVICES.
  2. FOR COMMERCIAL PROPERTIES WITH ZERO LOT LINE PLACE METER ONE FOOT BEHIND CURB.
  3. ALL METERS SHALL BE INSTALLED BEHIND SIDEWALK & OUTSIDE OF DRIVEWAY AREA.
  4. SEE SPEC. SECTION 802.8.4
  5. TAMPERING AND ACCESS OF THE METER CAN IS PROHIBITED. FOR ACCESS INTO METER CAN, CONTACT CITY'S O&M CONTRACTOR.
  6. REVISED METER PIG TAIL STUB OUT.
  7. SHOULD THE CITY DEEM USE OF THE PROPERTY AS HIGH HAZARD, THEN AN RP BACKFLOW IN ADDITION TO THE DOUBLE CHECK VALVE WILL BE REQUIRED.

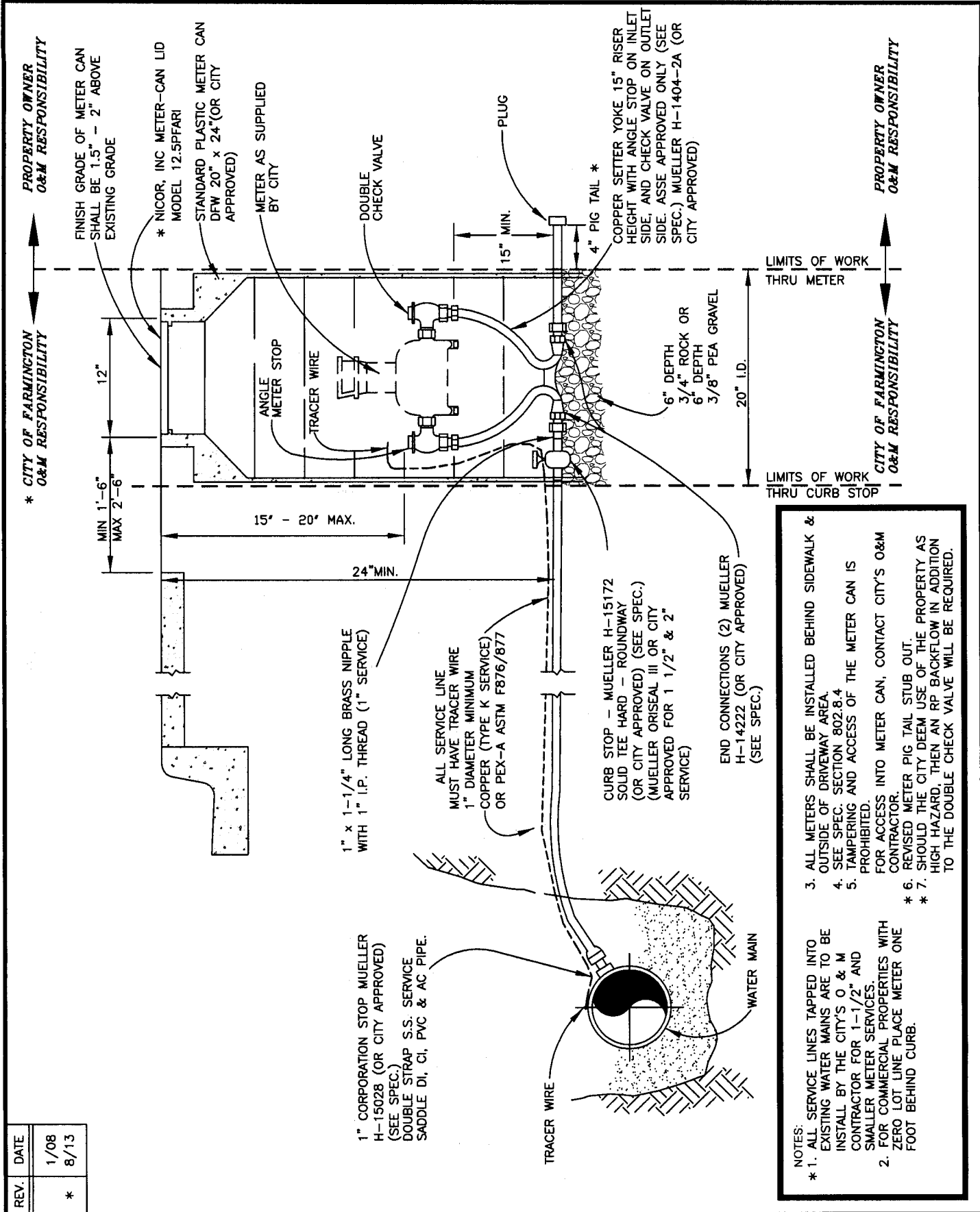
REV.	DATE
1/08	
8/13	
*	

# CONSTRUCTION STANDARDS

# WATER SERVICE CONNECTION 1" METER

STANDARD No. D-216 SHEET 1 OF 1

CITY OF FARMINGTON  
PUBLIC WORKS DEPARTMENT



- NOTES:**
- ALL SERVICE LINES TAPPED INTO EXISTING WATER MAINS ARE TO BE INSTALLED BY THE CITY'S O & M CONTRACTOR FOR 1-1/2" AND SMALLER METER SERVICES.
  - FOR COMMERCIAL PROPERTIES WITH ZERO LOT LINE, PLACE METER ONE FOOT BEHIND CURB.
  - ALL METERS SHALL BE INSTALLED BEHIND SIDEWALK & OUTSIDE OF DRIVEWAY AREA. SEE SPEC. SECTION 802.8.4
  - TAMPERING AND ACCESS OF THE METER CAN IS PROHIBITED.
  - FOR ACCESS INTO METER CAN, CONTACT CITY'S O&M CONTRACTOR.
  - REVISED METER PIG TAIL STUB OUT.
  - SHOULD THE CITY DEEM USE OF THE PROPERTY AS HIGH HAZARD, THEN AN RP BACKFLOW IN ADDITION TO THE DOUBLE CHECK VALVE WILL BE REQUIRED.

APPROVED *[Signature]* DATE 3/31/14

REV.	DATE
*	1/08 8/13

# CONSTRUCTION STANDARDS

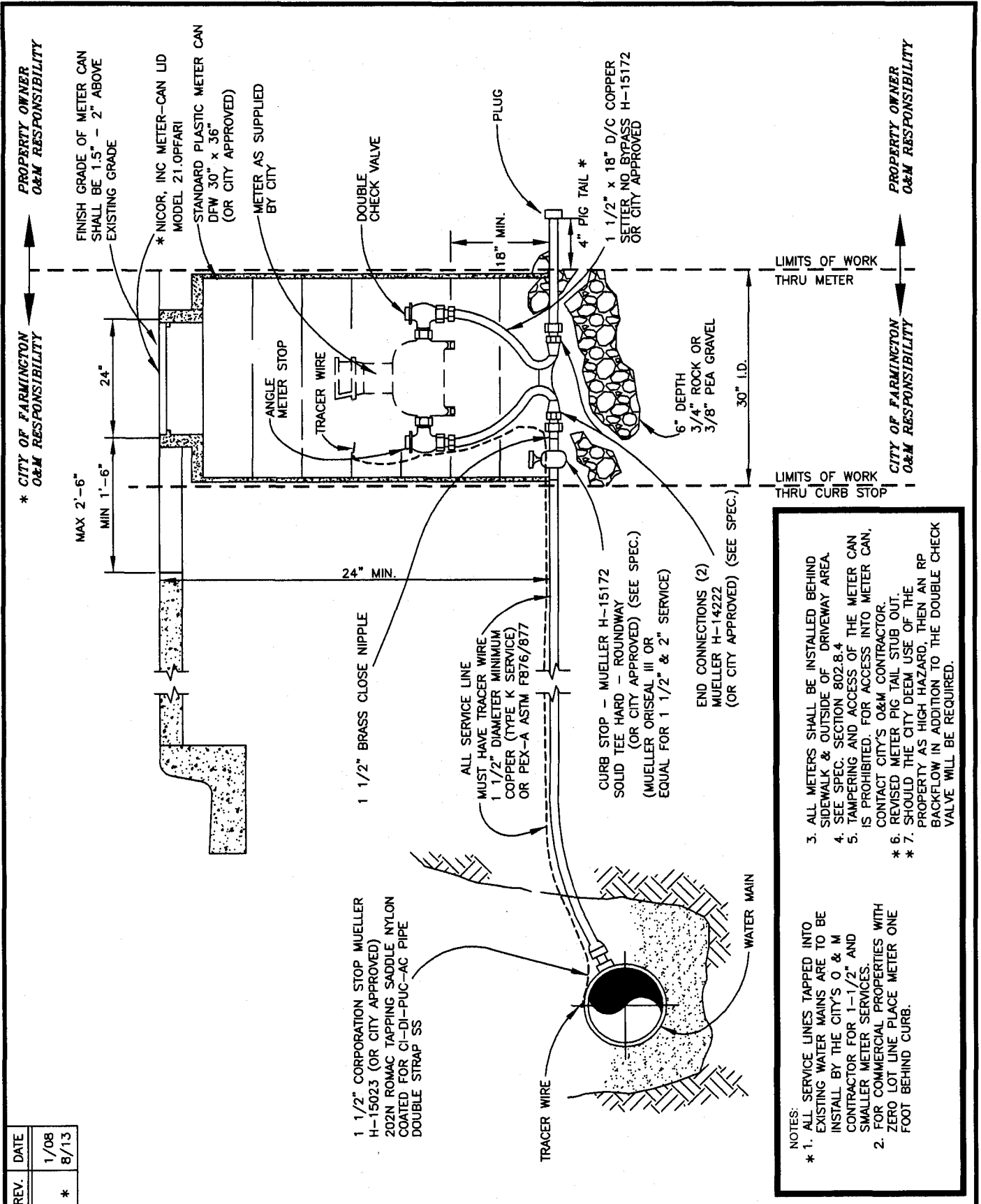
# WATER SERVICE CONNECTION 1 1/2" METER

STANDARD No. D-217 SHEET 1 OF 1

CITY OF FARMINGTON

PUBLIC WORKS DEPARTMENT

APPROVED *[Signature]* DATE 8/27/13



- NOTES:
- \* 1. ALL SERVICE LINES TAPPED INTO EXISTING WATER MAINS ARE TO BE INSTALLED BY THE CITY'S O & M CONTRACTOR FOR 1-1/2" AND SMALLER METER SERVICES.
  - \* 2. FOR COMMERCIAL PROPERTIES WITH ZERO LOT LINE PLACE METER ONE FOOT BEHIND CURB.
  - \* 3. ALL METERS SHALL BE INSTALLED BEHIND SIDEWALK & OUTSIDE OF DRIVEWAY AREA. SEE SPEC. SECTION 802.8.4
  - \* 4. TAMPERING AND ACCESS OF THE METER CAN IS PROHIBITED. FOR ACCESS INTO METER CAN, CONTACT CITY'S O&M CONTRACTOR.
  - \* 5. REVISED METER PIG TAIL STUB OUT.
  - \* 6. SHOULD THE CITY DEEM USE OF THE PROPERTY AS HIGH HAZARD, THEN AN RP BACKFLOW IN ADDITION TO THE DOUBLE CHECK VALVE WILL BE REQUIRED.

LIMITS OF WORK THRU CURB STOP

LIMITS OF WORK THRU METER

CITY OF FARMINGTON O&M RESPONSIBILITY

PROPERTY OWNER O&M RESPONSIBILITY