

Statistical Data

PERSONNEL AND RANK/ACTUAL STRENGTH as of December 31, 2003

ADMINISTRATION

	2000	2001	2002	2003
Chief:	1	1	0	1
Deputy Chief:	0	0	0	0
Captains:	2	2	2	2
Lieutenants:	1	1	1	1
Sergeants:	1	1	1	1
Administrative Support Officers:	2	2	2	3
Police Assistants:*	4	6	6	3
Computer Specialist:*	1	1	1	1
Support Services Specialist:*	1	1	1	1
Administrative Aide:*	1	1	1	1
Secretary II:*	1	1	1	1
Accreditation Manager (Sgt):	0	0	0	0
Recruits in Training:	5	11	1	4
Vacancies:	8	12	5	1
Crosswalk Guards, Seasonal:*	25	27	34	34
Chaplin (Volunteer):*	2	2	1	1

*Denotes Non-Commissioned

OPERATIONS

PATROL

	2000	2001	2002	2003
Lieutenants:	2	2	2	2
Sergeants:	9	9	9	9
District Officers:	41	45	58	45
Traffic Officers:	6	5	5	6
Canine Officers:	2	2	2	2
Community Service Officers:*	5	5	5	5
Foot/Bike Patrol Officers:	2	2	2	2
C.O.P.'s Officers	1	1	1	1

*Denotes Non-Commissioned

DETECTIVES

	2000	2001	2002	2003
Lieutenant:	1	1	1	1
Sergeants:	2	2	2	2
Case Detectives:	8	8	9	12
Crime Lab Personnel:	1	1	1	1
Warrants Officer:	0	0	0	0
School Resource Officers:	2	2	4	4
C.O.P.s. Detectives:	0	0	0	0
Secretary II:*	3	3	3	3
Victim/Witness Advocate:*	1	1	0	1

*Denotes Non-Commissioned

NARCOTICS TASK FORCE

	2000	2001	2002	2003
Regional Director :	1	1	1	1
San Juan County Supervisor (Sgt):	1	1	1	1
Agents:	2	3	3	3
Administrative Aide:*	1	1	1	1
K-9 Officer:	1	1	1	1

*Denotes Non-Commissioned

JAIL/DETENTION

	2000	2001	2002	2003
Jail Administrator:	0	0	0	0
Booking Officer Supervisors:*	3	4	4	4
Booking Officers:*	9	8	8	9
Secretary II, Part Time:*	1	1	1	1
Working Inmate Coordinator:*	1	1	1	1

*Denotes Non-Commissioned

RECORDS AND IDENTIFICATION

	2000	2001	2002	2003
Civilian Operations Supervisor:*	1	1	1	1
Records Technicians:*	5	5	5	5
PBX/Clerk Typists:*	6	6	6	6
Terminal Agency Coordinators:*	2	2	1	2

* Denotes Non-Commissioned

PERSONNEL ACTION

PROMOTIONS:	2000	2001	2002	2003
Commissioned Personnel:				
Sergeant:	3	0	0	0
Lieutenant:	2	0	0	0
Captain:	0	0	0	0

NEW EMPLOYEES HIRED

Commissioned Personnel:				
Officers Recruited:	11	13	13	13
Civilian Personnel:	8	8	6	5
Crosswalk Guards, Seasonal:	36	27	34	34

SEPARATIONS

Commissioned Personnel:				
Resignations:	2	4	6	6
Dismissed:	0	4	0	0
Killed in Line of Duty:	0	0	0	0
Deceased:	0	0	0	0
Retired, Pension (Disability):	0	0	0	0
Retired on Pension:	4	2	2	2
TOTALS	6	10	8	8

Civilian Personnel:				
Resignations:	10	5	7	5
Terminations:	1	1	0	0
Transferred to Different Dept:	1	0	0	1
Retired on Pension:	1	1	1	1
TOTALS	13	7	8	7

Crosswalk Guards:				
Resignations:	36	33	34	34
Terminations:	0	0	0	1

INSPECTIONS AND INTERNAL AFFAIRS

INVESTIGATION CATEGORIES

Citizen Complaints:	2000	2001	2002	2003
Sustained	2	8	11	9
Unsustained	1	15	12	11
Exonerated	17	17	15	27
Policy Failure	0	1	1	0
Unfounded	2	2	0	0
Pending	0	1	1	0
TOTALS	22	44	40	47

Internal Investigations:

Sustained	0	4	2	8
Unsustained	2	0	0	1
Exonerated	9	1	2	3
Policy Failure	0	0	0	0
Unfounded	4	0	0	0
Pending	0	0	0	0
TOTALS	15	5	4	12

Inquiries :*

Exonerated	0	0	1	0
Policy Failure	0	1	0	0
Unfounded	1	0	0	0
Pending	0	0	0	0
TOTALS	1	1	1	0

**-INQUIRIES mandate a FINDING of EXONERATED, UNFOUNDED, or POLICY FAILURE, otherwise they are upgraded and classified as a CITIZEN COMPLAINT or an INTERNAL INVESTIGATION.*

GENERAL INFORMATION

	2000	2001	2002	2003
City Population (Approximate)	41,000	42,000	42,000	42,000
Square Miles (Approximate)	33	33	33	33
Adult Arrests	5,011	5,610	5,320	4,887
Juvenile Arrests	1,589	1,428	1,436	1,263
Accidents Reported	1,933	2,140	1,965	1,987
Traffic Citations Issued	27,369	24,682	24,726	24,515
Municipal Citations Issued	2,345	2,188	2,450	2,262
Report Numbers Issued	7,912	8,262	8,198	6,517
Number of Authorized Certified Officers	101	105	106	106
Dispatches (Calls for Service)	57,515	60,129	63,423	64,210
Teletypes Sent	92 ¹	1,894 ²	2,275	80
Traffic Stops	23,784	22,294	24,024	24,123
Alarms	1,650	1,731	1,523	1,469
Detox Transports	1,749	2,206	1,399	1,256

¹ Includes NCIC transactions. Does not reflect the number of Teletype or NCIC transactions performed by the County Communications Center for this department.

² First year Triple I transactions tracked.

ADULT ARREST COMPARISON

	2000	2001	2002	2003
Murder by Negligence	0	3	1	1
Murder Non-Negligence/Manslaughter	1	0	1	2
Rape by Force	2	6	2	1
Assaults	86	113	89	116
Burglaries	20	21	38	26
Larcenies	180	212	220	290
Motor Vehicle Theft	6	3	10	11
Forgery/Counterfeiting	16	22	27	14
Fraudulent Activity	11	14	20	28
Embezzlement	4	5	4	24
Stolen Property	8	12	17	9
Sale/Growing Marijuana	13	11	10	30
Possession of Marijuana	89	84	128	183
Drugs- Sale/Manufacturing	29	47	46	41
Drugs/Possession	51	46	52	167
Sex Offenses (Not Rape)	0	0	5	85
Liquor Laws Violations	235	252	167	478
Carrying Concealed Weapon	15	17	45	51
Disorderly Conduct	143	95	181	163
Driving While Under Influence	944	1,159	1,119	993
All Other Offenses	3,158	3,197	3,139	2,171
TOTALS	5,011	5,610	5,320	4,887

MAJOR OFFENSE COMPARISON

	2000	2001	2002	2003
Criminal Homicide	1	3	1	2
Manslaughter By Negligence	0	0	2	0
Rape By Force	32	43	51	47
Robbery	41	43	60	42
Assault	1,070	1,113	938	908
Burglary	368	372	429	401
Larceny/Theft	1,219	1,143	1,269	1,108
Motor Vehicle Theft	122	106	126	142
Arson/Structure	6	0	10	7
Arson/Vehicle	7	2	4	4

(Due to Uniform Crime Reporting guidelines some categories may be combined)

ACCIDENT COMPARISONS

	2000	2001	2002	2003
Fatal Accidents	2	1	2	4
Fatalities (Total Deaths)	2	1	2	4
Delayed Fatalities	1	1	0	0
Private Property Fatalities	0	0	0	0
Injury Accidents	554	601	546	496
Non-Injury Accidents	787	886	839	887
Hit and Run Accidents	246	240	218	203
City Vehicle Accidents	24	40	7	12
Private Property Accidents	322	370	351	385
<i>TOTAL NUMBER OF ACCIDENTS</i>	1,933	2,140	1,965	1,987

REGION II NARCOTICS TASK FORCE
(Farmington Office Only)

	2000	2001	2002	2003
INVESTIGATIONS:				
Initiated	266	239	540	480
Completed	147	58	98	70
Ongoing	1260	229	463	472
<i>Total Arrests</i>	238	201	203	342

DRUG SEIZURES:

	Grams	Value-\$	Grams	Value-\$	Grams	Value-\$	Grams	Value-\$
Cocaine	85	7,400	44.15	5,720	40.39	17,555	190.59	19,059
Crack	14	46	14.8	1,270	13.7	1,450	34.37	3,437
Heroin	0	0	5.3	875	0	0	0	0
Marijuana	17,032	65,810	4,282	39,885	8,119	28,069	449.46 lbs	791,296
Marijuana Plants					32 plants	32,000	58 plants	58,000
Methamphetamine	1,989	198,900	15,813	1,571,065	6,381	637,477	30.33 lbs	1,516,558

DRUG PURCHASES:

	Grams	Value-\$	Grams	Value-\$	Grams	Value-\$	Grams	Value-\$
Cocaine	1,020	100,970	.5	60	10.3	1,040	25.55	2,555
Crack	0	0	9.7	880	267.13	26,703	22.5	225
Heroin	0	0	0	0	.4	40	0	0
Methamphetamine	130	6,815	613	14,880	2556.22	224,997	832.9	83,920

ACADEMY TRAINING

SAN JUAN COUNTY CRIMINAL JUSTICE TRAINING AUTHORITY

Basic Training

2000	2001	2002	2003
------	------	------	------

GRADUATES:

	2000	2001	2002	2003
Farmington	12	11	9	5
Other Agencies	12	13	9	10

JAIL DIVISION

	2000	2001	2002	2003
Total Number Booked	5,078	5,664	5,966	5,842
Felony Prisoners	636	847	864	863
Misdemeanor Prisoners	3,969	4,401	4,753	4,429
Probation Holds	473	416	349	550
Transport Time (Total Hours)	1,038	1,248	1,052	954
Court Escort (Total Hours)	772	1,262	790	974
Sentenced or Transported to Aztec	1,742	2,177	2,900	3,145
Released Prior to Court (Bond, Released on Recognizance, Etc.)	2,284	2,633	2,527	2,297
Meals Served	24,535	22,600	16,603	13,933
Average Cost per Meal	\$2.01	\$2.01	\$2.06	\$2.02
Dollar Value of Community Service Performed	\$14,137	\$36,724	\$43,827	\$22,763
Hours of Community Service Performed	2,745	7,131	8,510	4,420

WARRANT ACTIVITIES

	2000	2001	2002	2003
Warrants Issued (District, Magistrate, & Municipal Courts)	4,038	4,965	5,677	5,318
Warrants Served by Officers	3,881	3,914	5,027	5,387
Warrants Inactivated	890	1,068	1,604	1,589
Warrants Pulled by Courts For Being Over One Year Old Or Unable to be Served	275	427	537	404
Warrants Cleared	5,046	5,409	7,168	7,380

ICC POLICE COMMUNITY OFFICE

	2001*	2002	2003
Detective Follow-Up Supplements	162	176	105
Supplements	81	106	135
Reports	700	712	483**
General Information & Service	2,176	2,571	2,411
Fingerprints	2,138	3,187	2,498
NCIC Entries	80	77	54
Local ATL's	70	96	63
Senior Citizen "Shut-Ins"	360	124	132
Close Patrols	54	219	56

* 2001 first year statistics noted

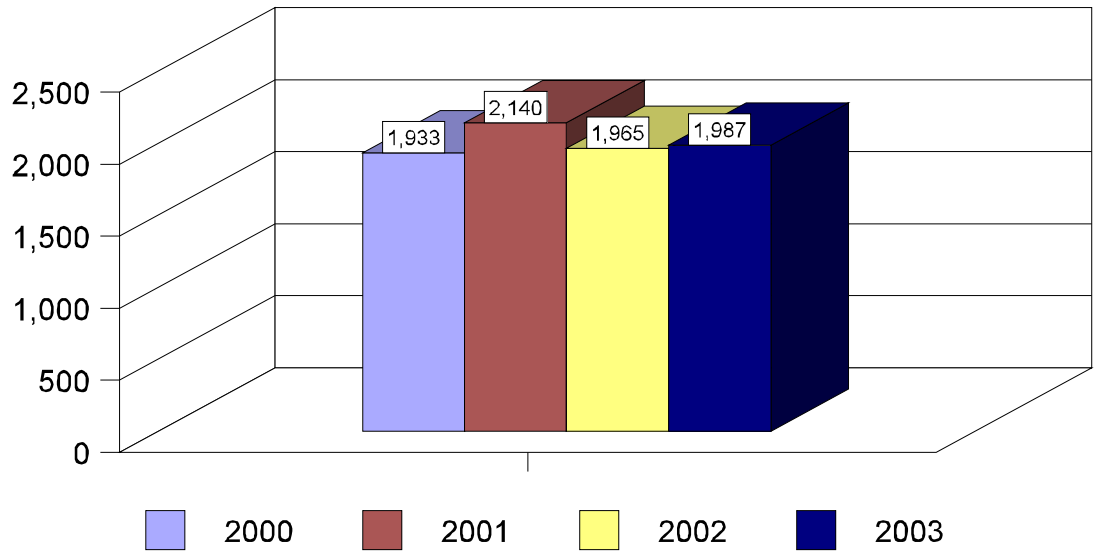
** 2003 Report statistics tracking method changed

The ICC substation is located at 4820 East Main and is open from 10:00 a.m. to 6:00 p.m. Monday through Saturday. Fingerprints are taken on Tuesdays and Thursdays from 10:30 a.m. until 12:00 p.m. and from 3:30 p.m. until 5:30 p.m. The substation is staffed by retired police officers, who handle walk-in and phone-in reports that do not require a certified officer.

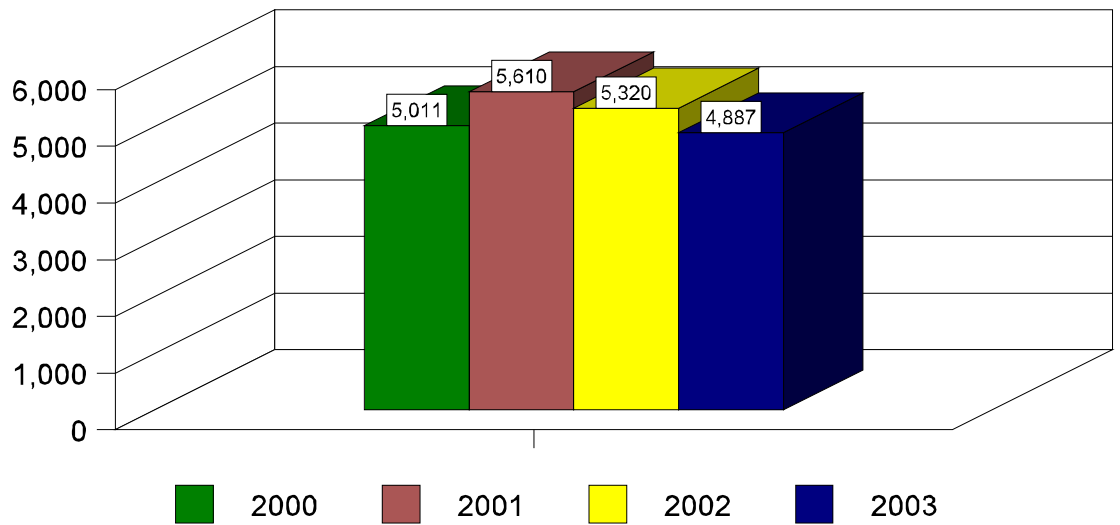
COMMUNITY AWARENESS PROGRAMS

	2000 Total	2001 Total	2002 Total	2003 Total
Tours of the Department	6	10	8	5
Bicycle/Vehicle Safety	2	3	3	8
Career Talks	5	1	2	5
Community Fairs	9	5	7	1
Self Defense	2	2	2	2
Child Safety	27	6	12	12
Elderly Seminars	4	0	2	0
Domestic Violence Advocate	14	14	15	9
Workplace Safety	5	2	6	5
Drug Awareness	5	2	11	9
Gang Awareness	7	25	25	22
<i>TOTALS</i>	86	70	93	78

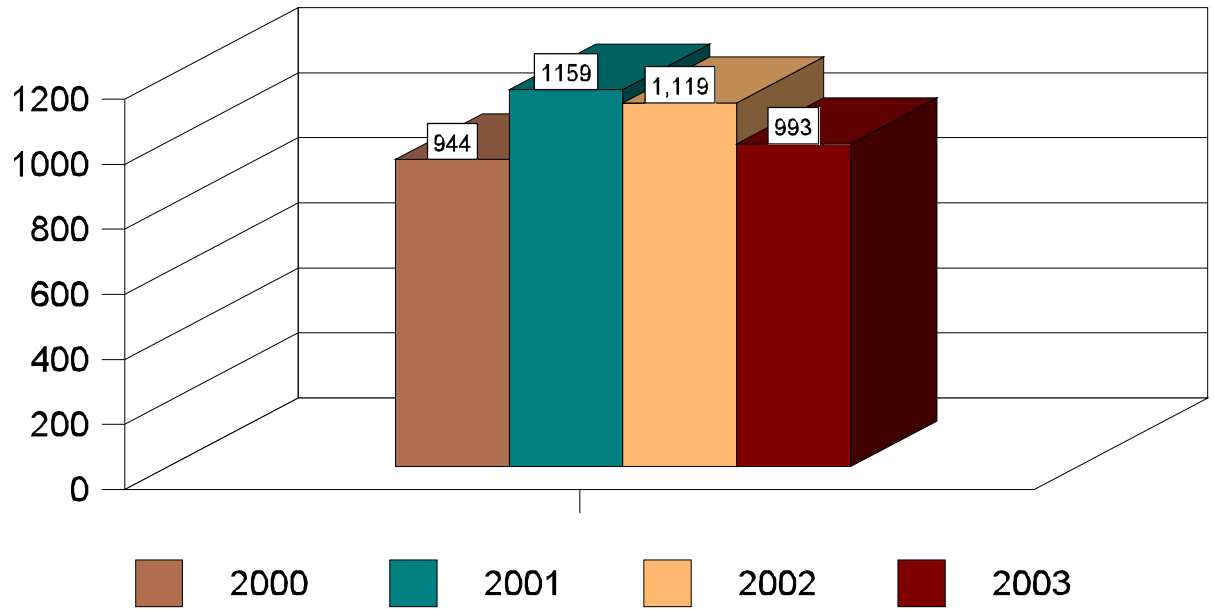
Accident Comparison



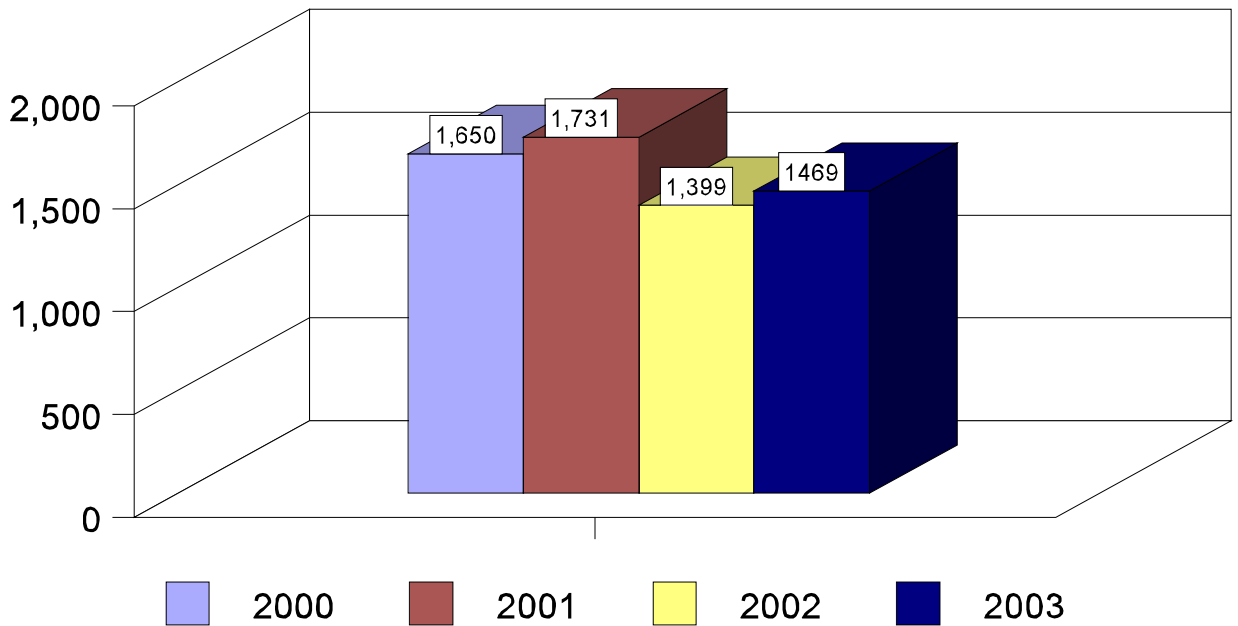
Adult Arrest Comparison



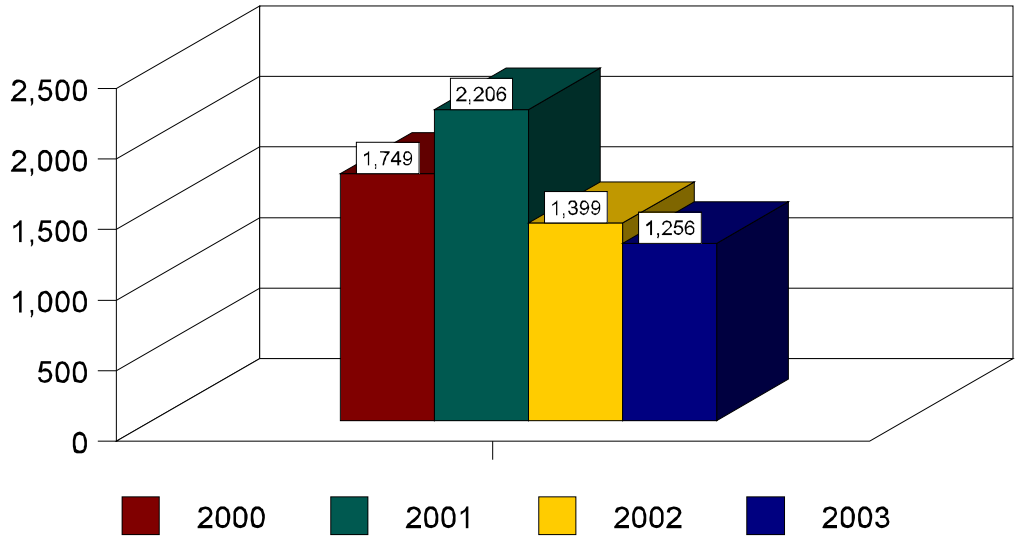
Adult DWI Arrests



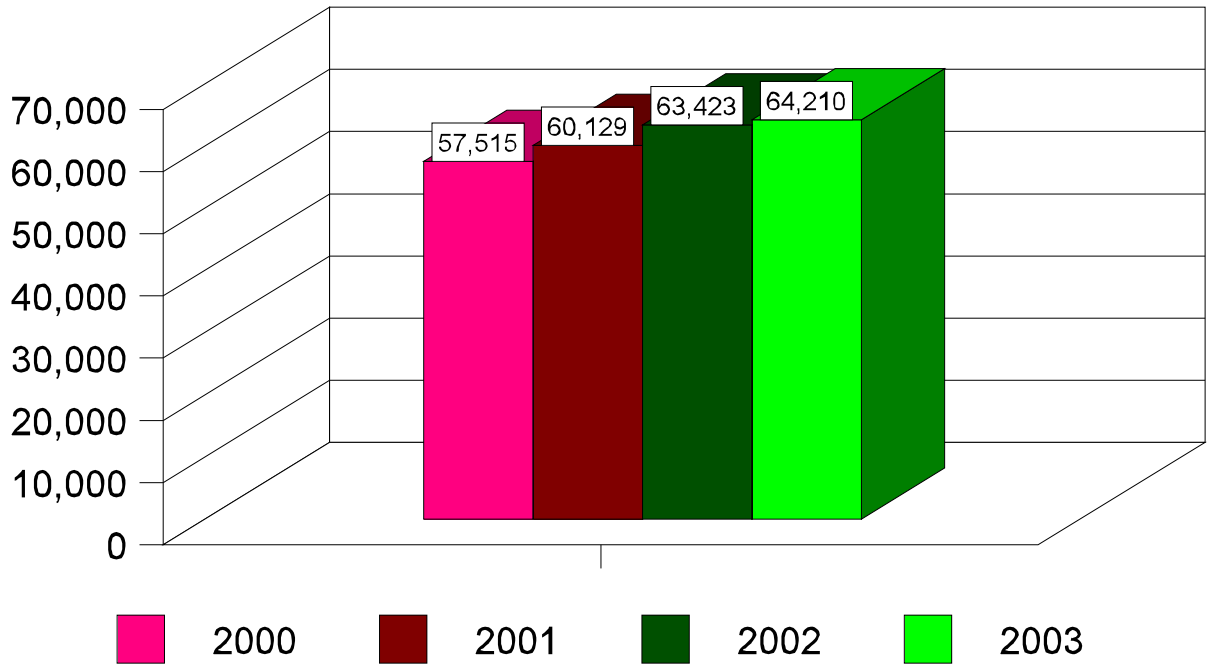
ALARM RESPONSES



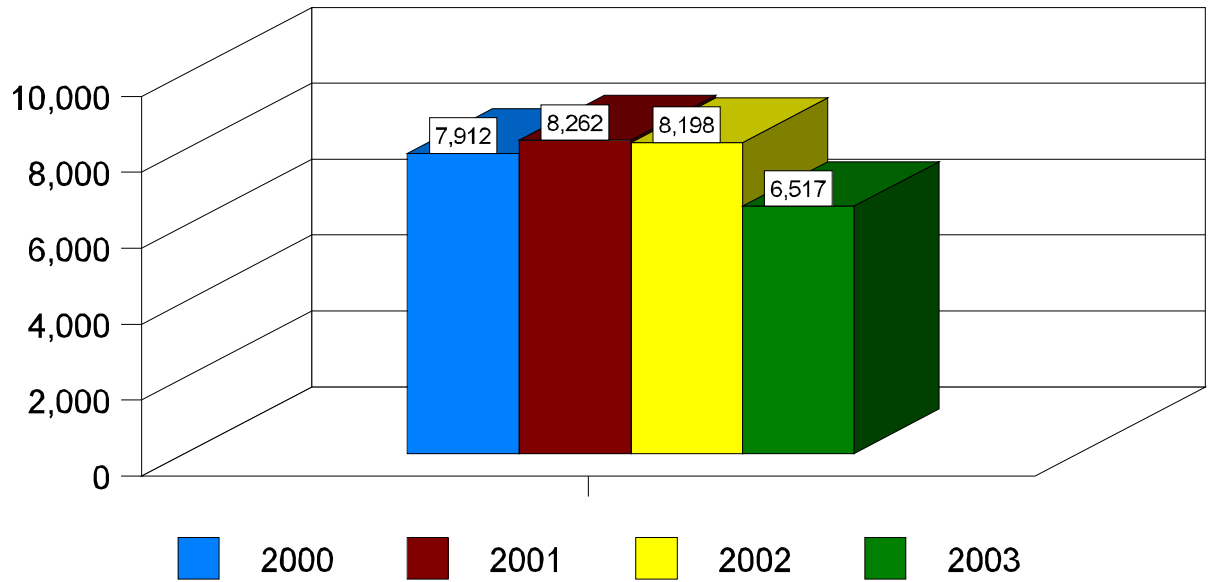
DETOX TRANSPORTS



CALLS FOR SERVICE



REPORTS TAKEN



TRAFFIC CITATIONS ISSUED

