

# MISCELLANEOUS DETAILS

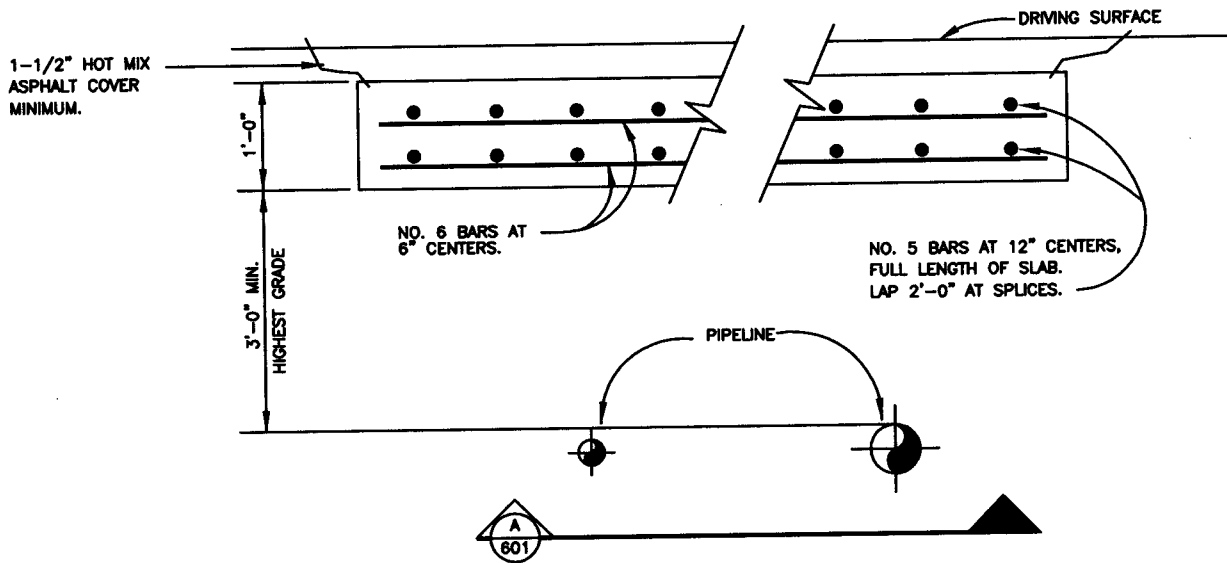
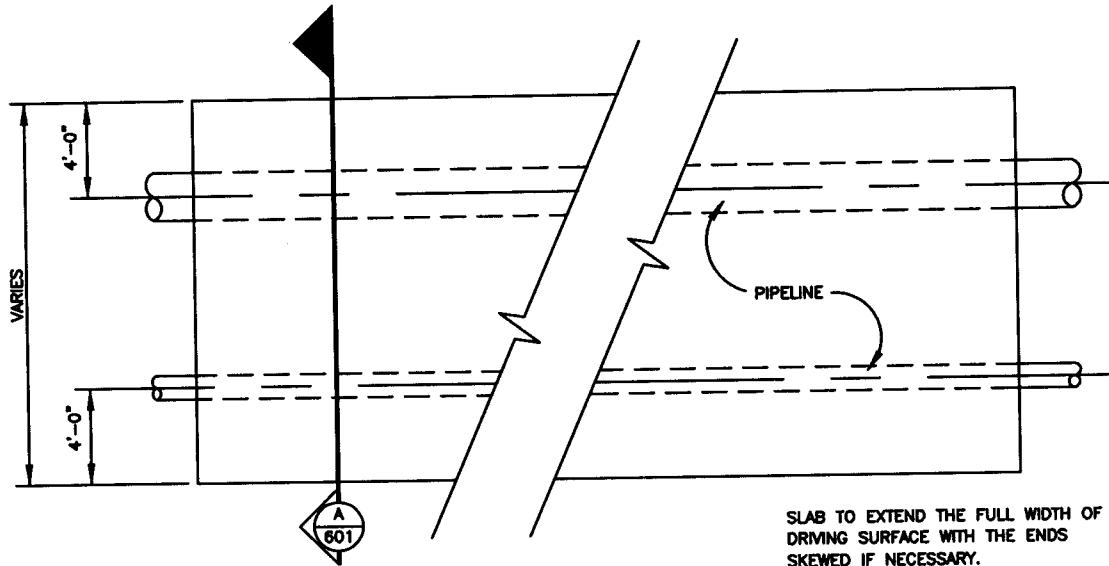
**CONSTRUCTION STANDARDS SHEET INDEX**

**MISCELLANEOUS DETAILS**

| <b><u>SHEET NO.</u></b> | <b><u>TITLE</u></b>                      |
|-------------------------|--|
| D 601                   | GAS LINE CROSSING DETAIL                 |
| D 603                   | ACCESSABILITY SIGN (2 SHEETS)            |
| D 605 *                 | GREASE TRAP DETAIL                       |
| D 606                   | MAILBOX DETAIL                           |
| D 607 *                 | WATERLINE INSTALLATION BETWEEN BUILDINGS |
| D 608                   | REINFORCED SOIL WALLS                    |
| D 609                   | SCHOOL FLASHER                           |
| D 611                   | EROSION CONTROL WALL                     |
| D 612 *                 | ELEVATION RESIDENTIAL DRAINAGE           |
| D 630                   | HAND RAILS                               |
| D 631                   | STORM DRAIN MARKERS                      |

NOTE: \* REVISED 2008

NOTE: ALL DETAIL SHEETS WERE REVISED TO SAY PUBLIC WORKS



LOADING: GROSS LOAD 150 TONS - MAXIMUM AXLE LOAD 60 TONS.  
 CONCRETE: ULTIMATE STRENGTH - 2500 P.S.I. IN 28 DAYS.  
 REINFORCING STEEL: A.S.T.M. A-15 INTERMEDIATE GRADE, AND  
 A.S.T.M. A-305 HIGH BOND.  
 CAUTION: HEAVY CONSTRUCTION EQUIPMENT SHALL NOT BE OPERATED  
 OVER UNPROTECTED PIPE AND SHALL NOT BE OPERATED  
 OVER SLAB UNTIL 14 DAYS AFTER POURING.

CONSTRUCTION  
STANDARDS

GAS LINE  
CROSSING DETAIL

STANDARD No. D-601 SHEET 1 OF 1

CITY OF  
FARMINGTON

PUBLIC  
WORKS  
DEPARTMENT

APPROVED *[Signature]* DATE 4/5/08

VAN ACCESSIBLE PARKING SPACES SHALL HAVE AN ADDITIONAL SIGN MOUNTED BELOW THE ACCESSIBLE PARKING SIGN UNLESS ALL THE ACCESSIBLE PARKING SPACES COMPLY WITH THE STANDARDS FOR VAN ACCESSIBLE PARKING.



GREEN LETTERING ON WHITE BACKGROUND

R7-8  
12" X 18"

BLUE SYMBOL

GREEN ARROW(S) AS APPROPRIATE



BLACK LETTERING ON WHITE BACKGROUND SIGN OPTIONAL



R7-8A  
12" X 9"

STURDY POST

5 FEET MINIMUM TO BOTTOM OF ANY SIGNAGE

40" MIN.

**NOTES**

1. SIGNS SHALL CONFORM TO THE STANDARDS OF THE "MANUAL ON UNIFORM TRAFFIC CONTROL DEVICES."
2. SIGNS SHALL BE SET DIRECTLY FACING THE LINE OF TRAVEL FOR THE VEHICLE ENTERING THE STALL (NOT < 45°)
3. SIGNS SHALL BE MOUNTED ON A STURDY POST AT THE HEIGHT SPECIFIED HERE IN, OR MAY BE SECURELY BOLTED TO AN ADJACENT WALL
4. EACH SPACE SHALL BE POSTED WITH A SIGN, CENTERED ON THE STALL, HOWEVER, ONE SIGN MAY BE USED BETWEEN THE TWO SPACES WITH THE APPROPRIATE ARROWS
5. 40" MIN. FROM FACE OF ADJACENT CURB OR BUMPER BLOCK

ACCESSIBLE PARKING SIGNS ARE AVAILABLE FROM THE BUILDING INSPECTION DIVISION AT COST AND ARE IN STOCK.  
 TELEPHONE 599-1304.  
 HOURS: 8:00 AM TO 12:00 PM AND 1:00 PM TO 5:00 PM MONDAY THROUGH FRIDAY.

CONSTRUCTION STANDARDS

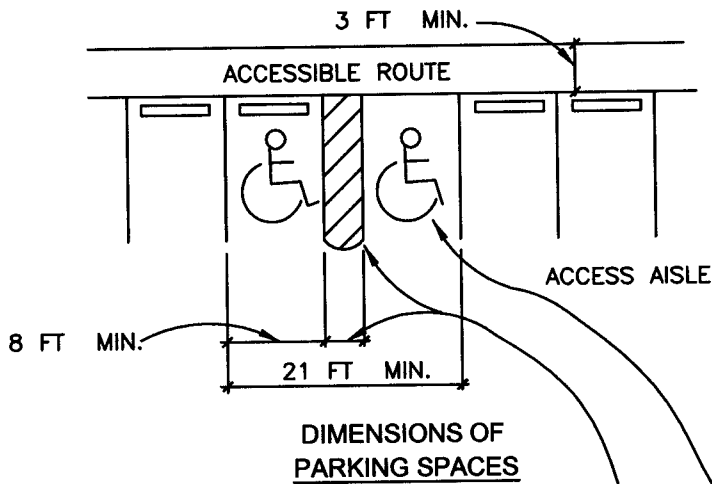
ACCESSIBLE PARKING SIGN DETAIL

CITY OF FARMINGTON

PUBLIC WORKS DEPARTMENT

STANDARD No. D-603 SHEET 1 OF 2

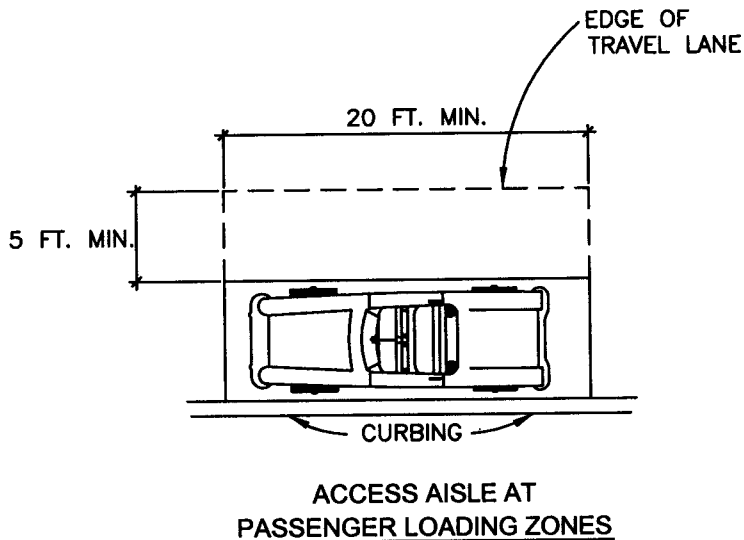
APPROVED *[Signature]* DATE 4/15/08



NOTE:  
 ACCESS AISLES SHALL ADJOIN AN ACCESSIBLE ROUTE. TWO PARKING SPACES SHALL BE PERMITTED TO SHARE A COMMON ACCESS AISLE. ACCESSIBLE PARKING SPACES SHALL BE PERMITTED TO HAVE ACCESS AISLES PLACED ON EITHER SIDE OF THE CAR OR VAN PARKING SPACE EXCEPT FOR ANGLED VAN PARKING SPACES. VAN PARKING SPACES THAT ARE ANGLED SHALL HAVE ACCESS AISLES LOCATED ON THE PASSENGER SIDE OF THE PARKING SPACE.

A CLEAR, VISIBLE DEPICTION OF THE INTERNATIONAL SYMBOL OF ACCESSIBILITY SHALL BE PAINTED IN BLUE ON THE PAVEMENT SURFACE. SYMBOL ON PAVEMENT IS REQUIRED.

5 FEET MINIMUM UNLESS ACCESSIBLE ACCESS (8 FEET MINIMUM REQUIRED FOR VAN ACCESSIBLE ACCESS AISLE). ACCESS AISLE SHALL BE CLEARLY MARKED BY BLUE DIAGONAL 4 INCH PAVEMENT STRIPING.



**CONSTRUCTION STANDARDS**

**ACCESSIBLE PARKING STALLS**

STANDARD No. D-603 SHEET 2 OF 2

CITY OF FARMINGTON

PUBLIC WORKS DEPARTMENT

APPROVED *[Signature]* DATE *4/15/08*

| REV. | DATE    |
|------|---------|
| ①    | 2/3/06  |
| ②    | 3/2/07  |
| ③    | 1/22/08 |

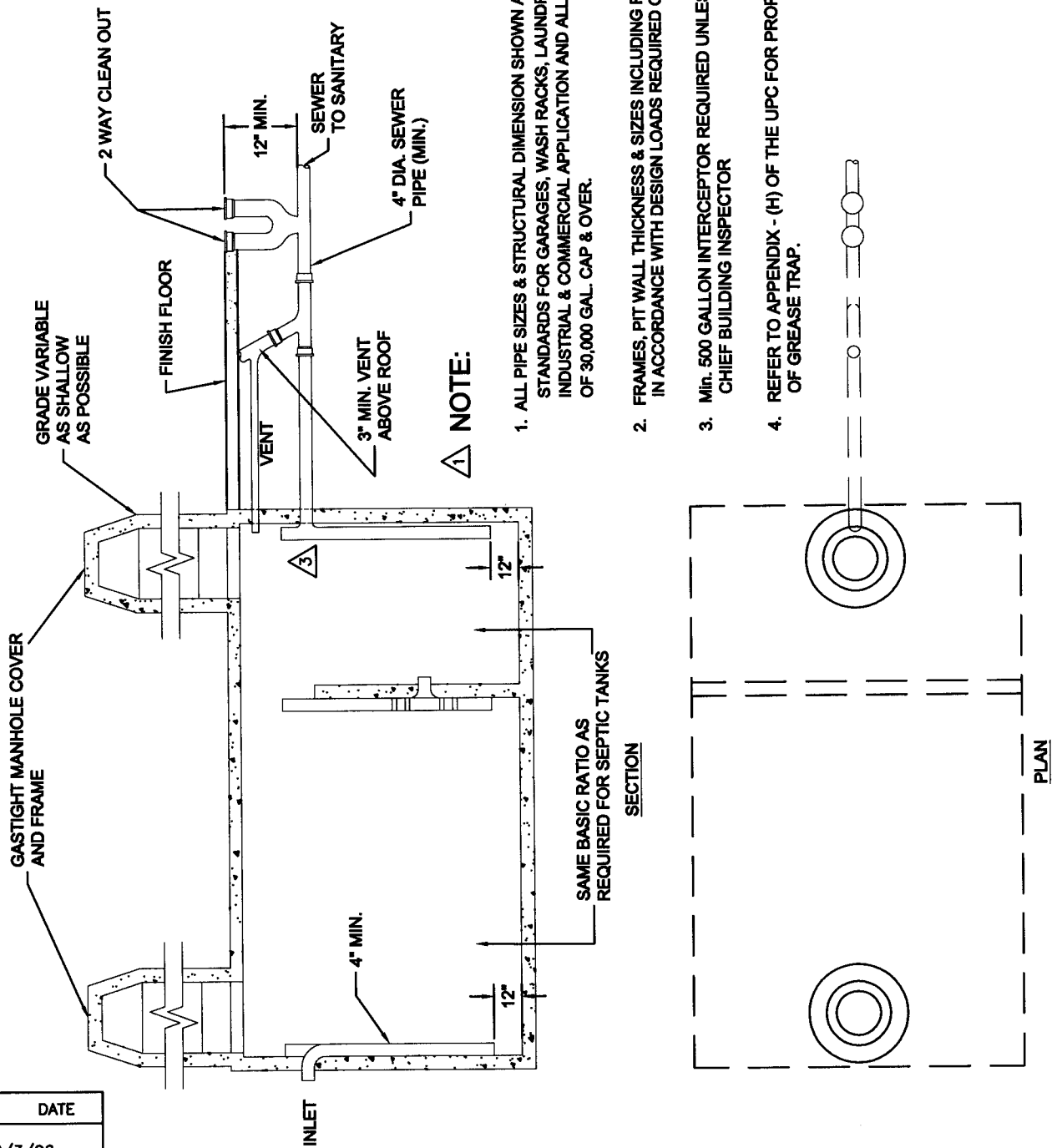
**CONSTRUCTION STANDARDS**

**GREASE TRAP DETAIL**

STANDARD No. D-605 SHEET 1 OF 1

CITY OF FARMINGTON

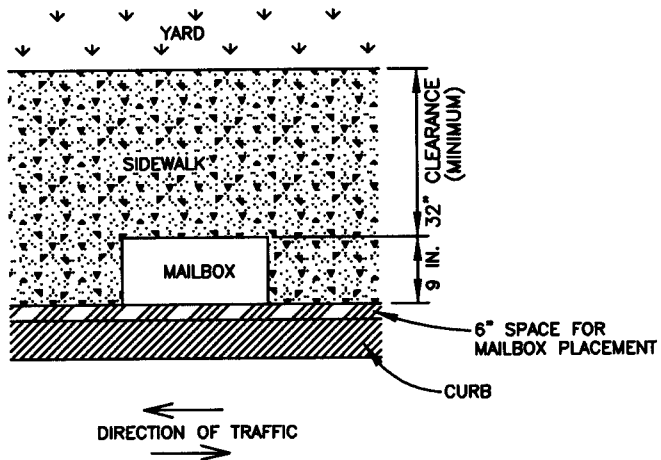
PUBLIC WORKS DEPARTMENT



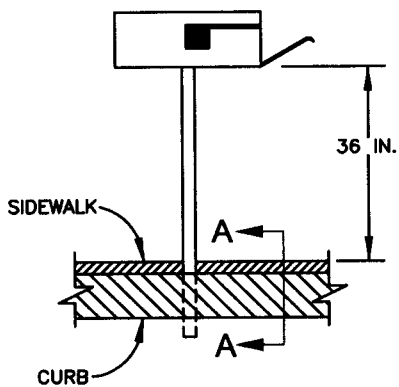
NOTE:

1. ALL PIPE SIZES & STRUCTURAL DIMENSION SHOWN ARE MIN. STANDARDS FOR GARAGES, WASH RACKS, LAUNDRIES, LAUNDERETTES, INDUSTRIAL & COMMERCIAL APPLICATION AND ALL SWIMMING POOLS OF 30,000 GAL. CAP & OVER.
2. FRAMES, PIT WALL THICKNESS & SIZES INCLUDING REINFORCING, SHALL BE IN ACCORDANCE WITH DESIGN LOADS REQUIRED OR EACH INSTALLATION.
3. Min. 500 GALLON INTERCEPTOR REQUIRED UNLESS APPROVED BY CHIEF BUILDING INSPECTOR
4. REFER TO APPENDIX - (H) OF THE UPC FOR PROPER SIZING OF GREASE TRAP.

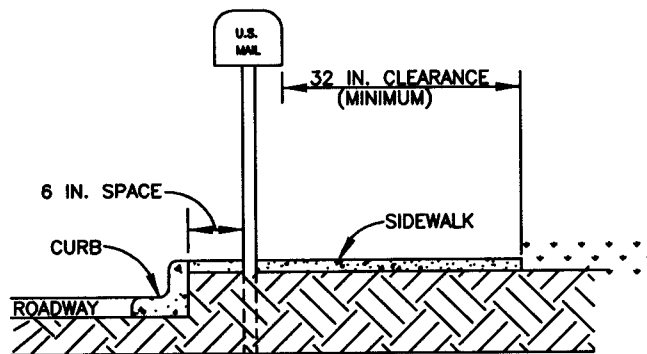
APPROVED *[Signature]* DATE 4/15/08



TOP VIEW



FRONT VIEW



SIDE VIEW  
(SECTION A-A)

| REV. | DATE     |
|------|----------|
| 1    | 10/30/95 |
| 2    | 1/20/99  |

\*USE SAME DETAIL FOR PAPER BOX.

CONSTRUCTION  
STANDARDS

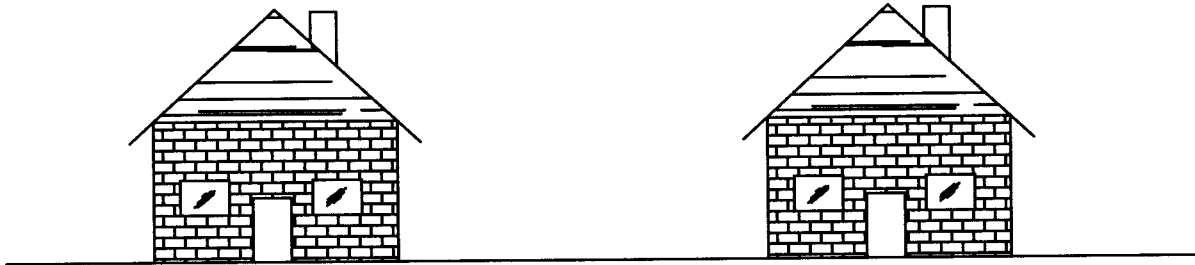
MAILBOX DETAIL\*

STANDARD No. D-606 SHEET 1 OF 1

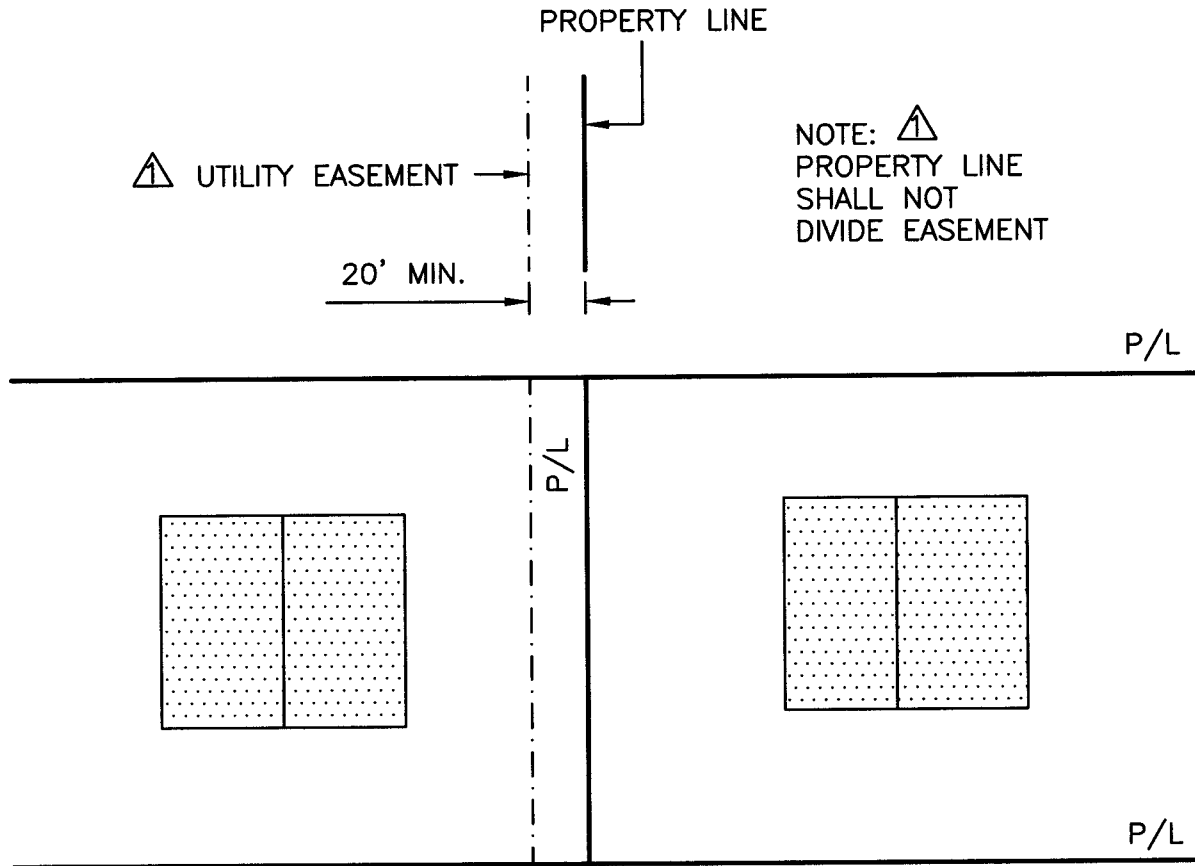
CITY OF  
FARMINGTON

PUBLIC  
WORKS  
DEPARTMENT

APPROVED DATE 4/15/08



FRONT VIEW



PLAN VIEW

NOTE

1) UTILITY EASEMENT SHALL NOT BE IMPEDED BY TREES, FENCES, STORAGE OR CARPORTS. IF FENCE IS INSTALLED GATES ARE NEEDED IN FRONT AND THE BACK.

| REV. | DATE     |
|------|----------|
| 1    | 01/31/06 |
| 2    | 1/22/08  |

**CONSTRUCTION  
STANDARDS**

**UTILITY INSTALLATION  
BETWEEN BUILDINGS**

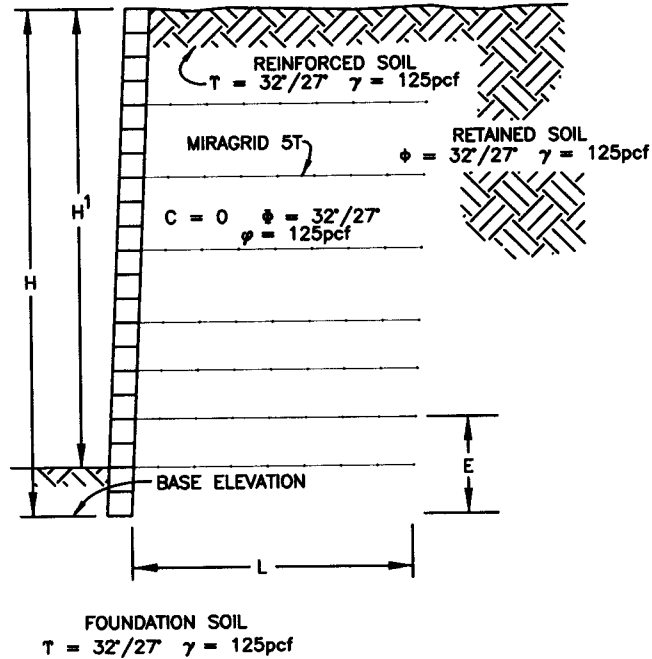
STANDARD No. D-607 SHEET 1 OF 1

**CITY OF  
FARMINGTON**

**PUBLIC  
WORKS  
DEPARTMENT**

APPROVED *[Signature]* DATE 4/15/08

**CASE I**



| REINFORCED SOIL WALLS  |                      |                   |                |                 |                     |  |
|--|----------------------|-------------------|----------------|-----------------|---------------------|--|
| EXPOSED HEIGHT H, (FT)   | TOTAL HEIGHT H, (FT) | NO. COURSES       | THICKNESS IN.  | NO. GRID LAYERS | GRID LENGTH L, (FT) | GEOGRID PLACEMENT ELEVATION E, (FT) ABOVE BASE ELEVATION |
| <b>CASE #1</b>   | <b>T2 27'</b>        | <b>γ ≤ 125pcf</b> | <b>PI = 10</b> |                 |                     |  |
| 4.0  | 4.5                  | 9                 | 6              | 1               | 3.0                 | E <sub>1</sub> - 2.0                                     |
| 5.5  | 6.5                  | 13                | 6              | 2               | 4.0                 | E <sub>1</sub> - 1.0      E <sub>2</sub> - 4.0           |
| DESIGN BASED ON MIRAGRID 5T. BUILDER MAY USE COMPARABLE OR EQUAL. IT IS RESPONSIBILITY OF THE INSTALLER TO SHOW COMPARISON TO CHIEF INSPECTOR PRIOR TO CONSTRUCTION. |                      |                   |                |                 |                     |  |

**CONSTRUCTION STANDARDS**

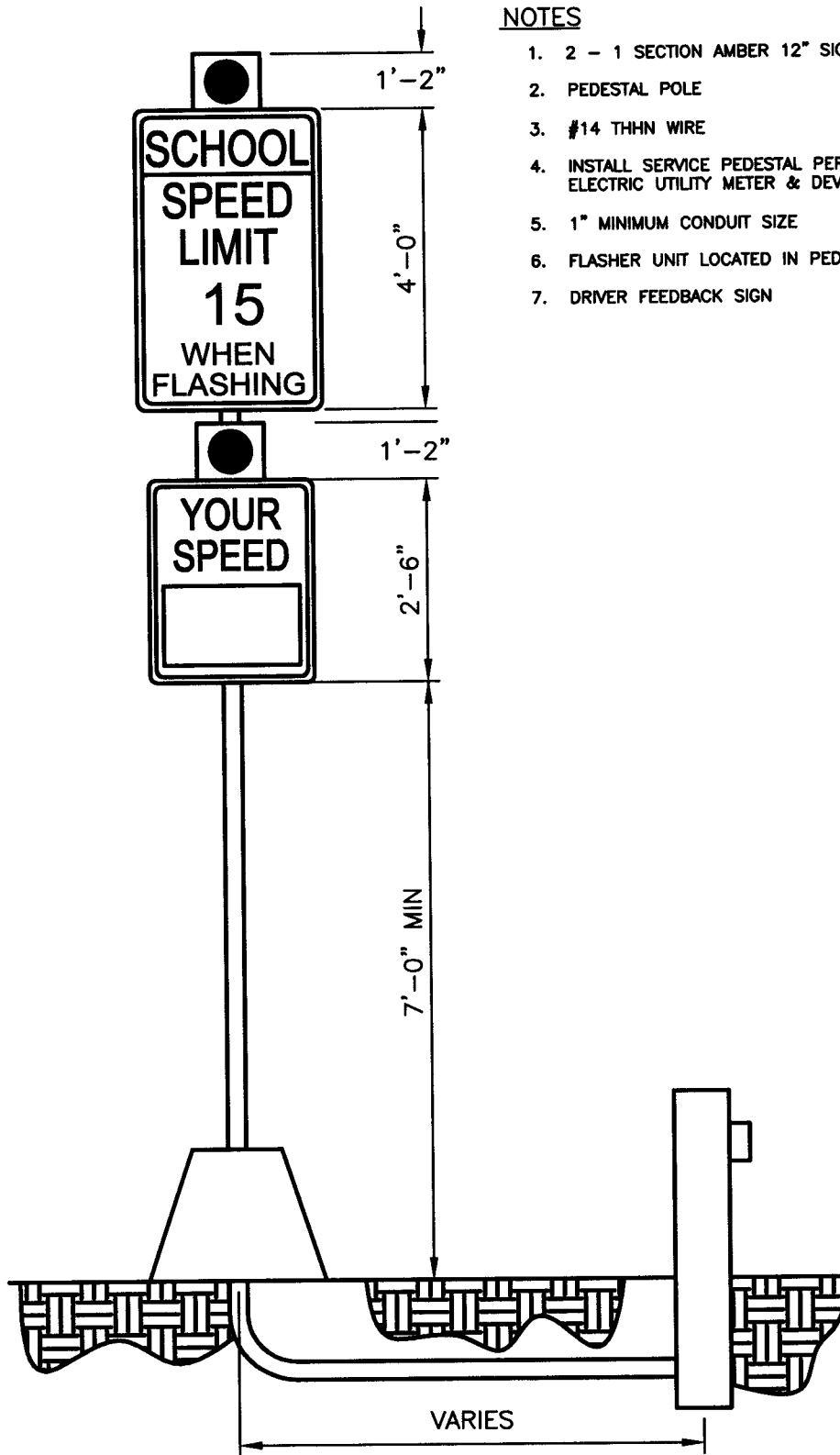
**REINFORCED SOIL WALLS  
CASE I**

STANDARD No. D-608 SHEET 1 OF 1

CITY OF FARMINGTON

PUBLIC WORKS DEPARTMENT

APPROVED *[Signature]* DATE 4/15/08



**NOTES**

1. 2 - 1 SECTION AMBER 12" SIGNAL HEAD
2. PEDESTAL POLE
3. #14 THHN WIRE
4. INSTALL SERVICE PEDESTAL PER US 26 OF THE FARMINGTON ELECTRIC UTILITY METER & DEVICE GUIDE
5. 1" MINIMUM CONDUIT SIZE
6. FLASHER UNIT LOCATED IN PEDESTAL POLE BASE
7. DRIVER FEEDBACK SIGN

CONSTRUCTION  
STANDARDS

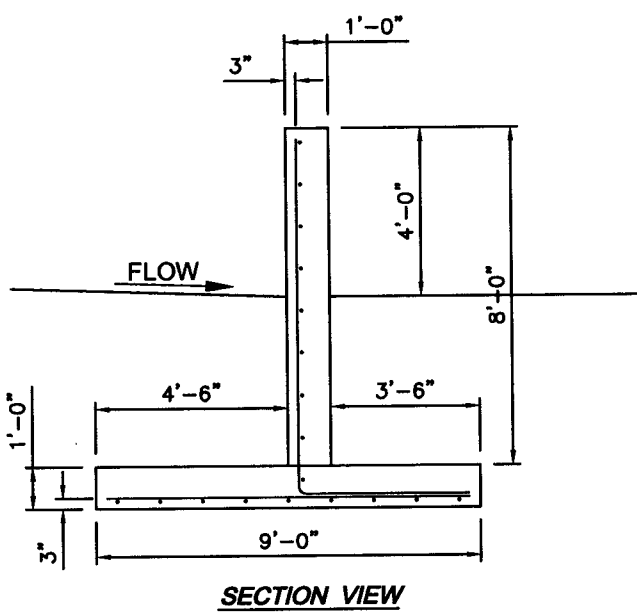
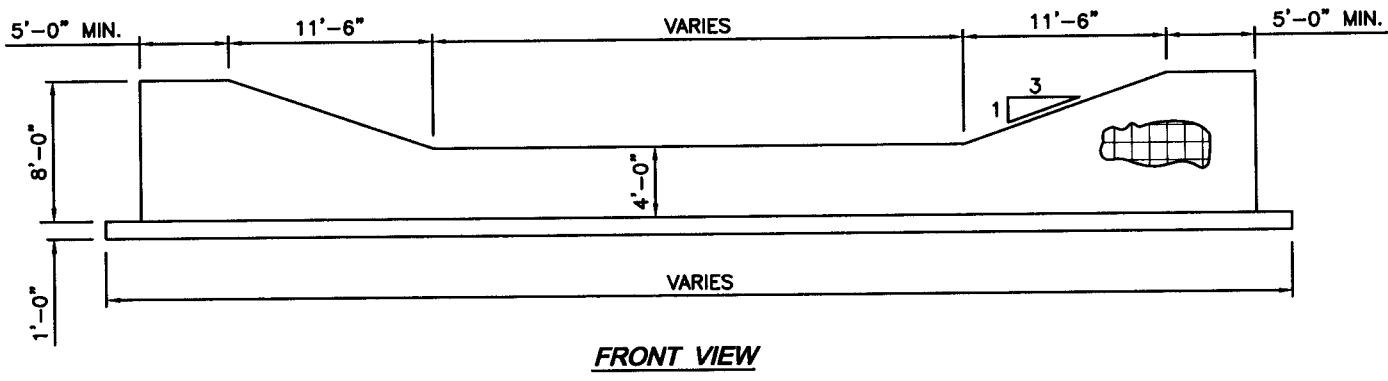
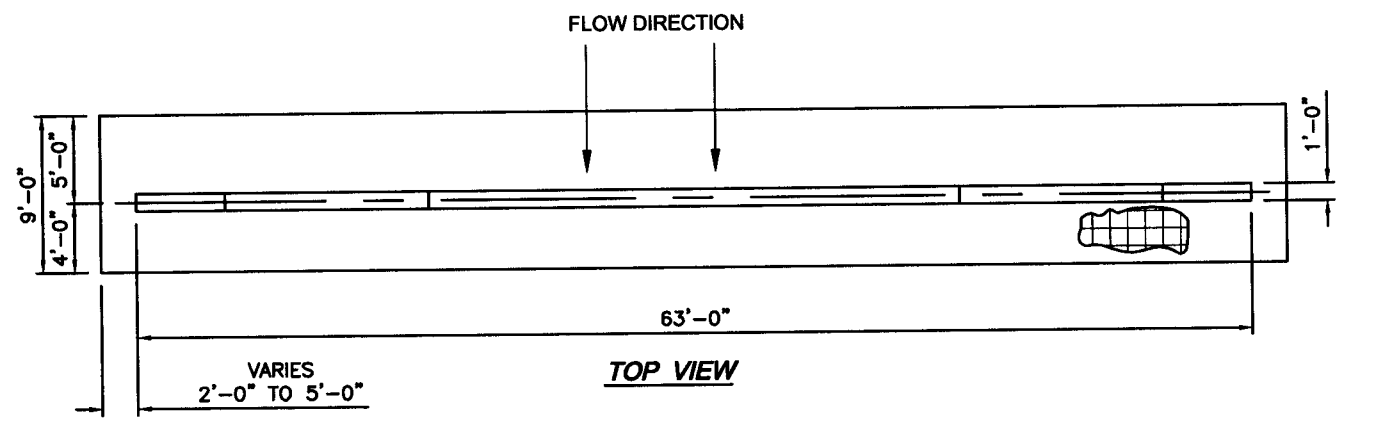
**SCHOOL FLASHER - 1**

STANDARD NO. D-609 SHEET 1 OF 1

CITY OF  
FARMINGTON

PUBLIC  
WORKS  
DEPARTMENT

APPROVED *M. J. [Signature]* DATE 4/15/08



- NOTE:**
1. #4 REBAR 12" O.C. IN BOTH DIRECTIONS
  2. SCH. 40 STEEL
  3. ALL DIMENSIONS ARE SUBJECT TO CHANGE DEPENDING ON FLOW REQUIREMENTS AND SCOUR DEPTH.
  4. REBAR SHALL BE PLACED 3" FROM UP STREAM FACE IN WALL AND 3" FROM BOTTOM IN FOOTER.
  4. USE 4000 P.S.I. CONCRETE

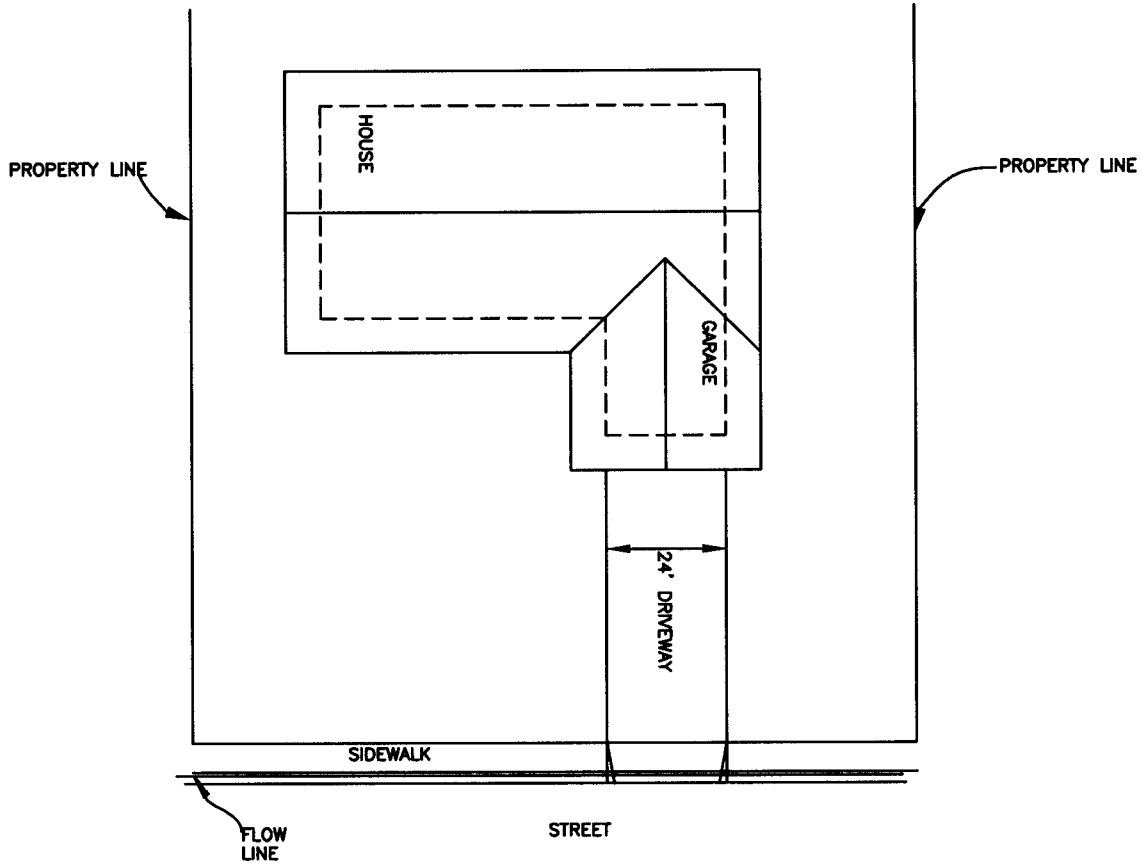
**CONSTRUCTION  
STANDARDS**

**EROSION CONTROL WALL**

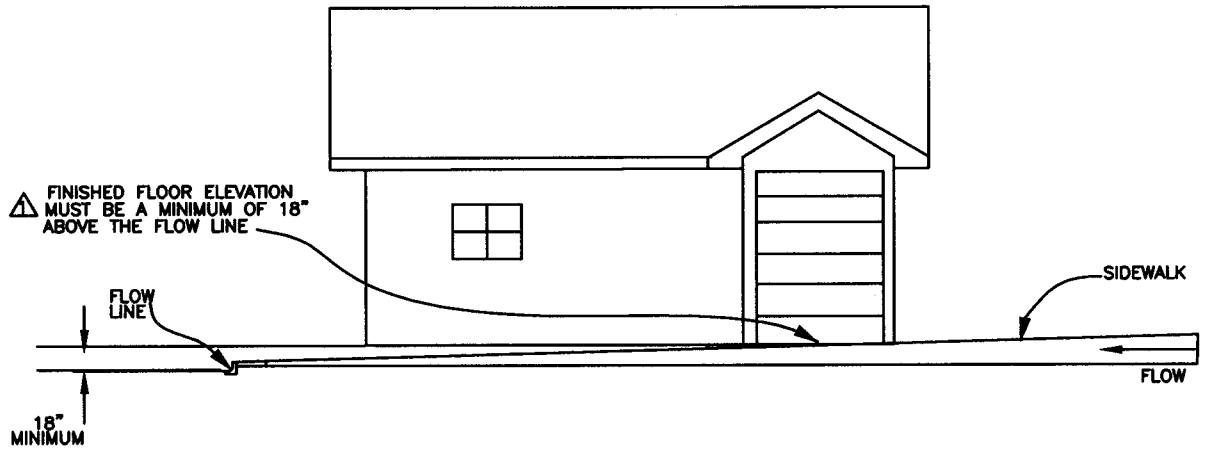
STANDARD No. D-611 SHEET 1 OF 1

CITY OF  
FARMINGTON  
PUBLIC  
WORKS  
DEPARTMENT

APPROVED *[Signature]* DATE 4/15/08



- NOTE:**
1. ALL IMPROVEMENTS MUST DRAIN AWAY FROM THE HOUSE TO STREET, DRAINAGE EASEMENT OR DETENTION POND.
  2. FINISHED FLOOR ELEVATION MUST BE A MINIMUM OF 18" ABOVE THE FLOW LINE OF THE GUTTER AT LOW SIDE OF LOT.
  3. IF CURB & GUTTER ARE ABSENT FLOWLINE IS AT THE EDGE OF ROADWAY AT LOW SIDE OF LOT.



| REV. | DATE    |
|------|---------|
| △    | 1/22/08 |

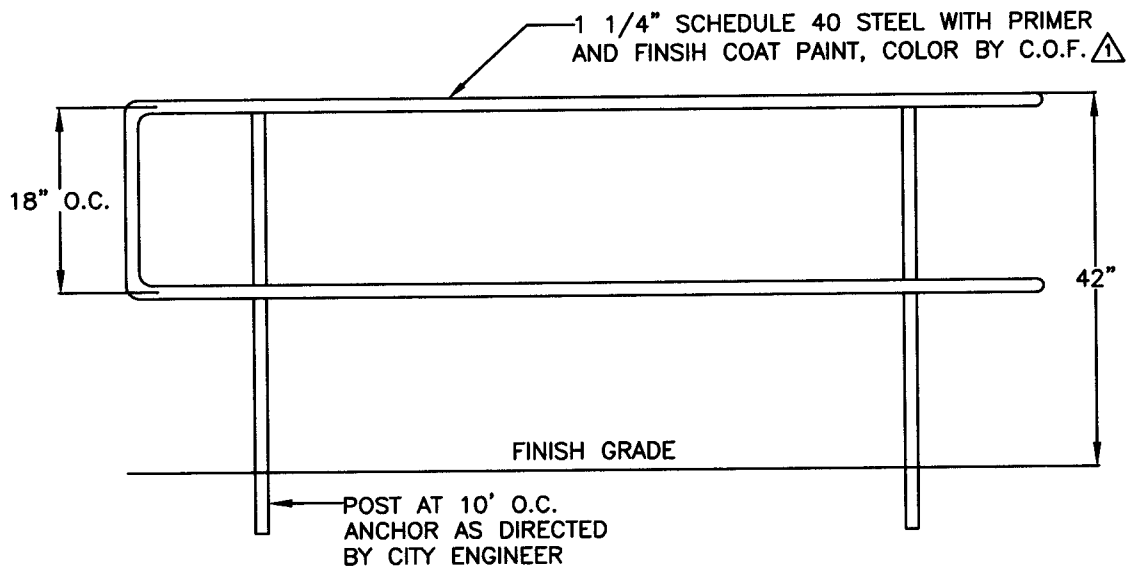
**CONSTRUCTION STANDARDS**

**ELEVATION RESIDENTIAL DRAINAGE**

STANDARD No. D-612 SHEET 1 OF 1

CITY OF FARMINGTON  
PUBLIC WORKS DEPARTMENT

APPROVED *[Signature]* DATE 4/15/08



| REV. | DATE     |
|------|----------|
| ⚠    | 01/26/06 |

CONSTRUCTION  
STANDARDS

HAND RAILS

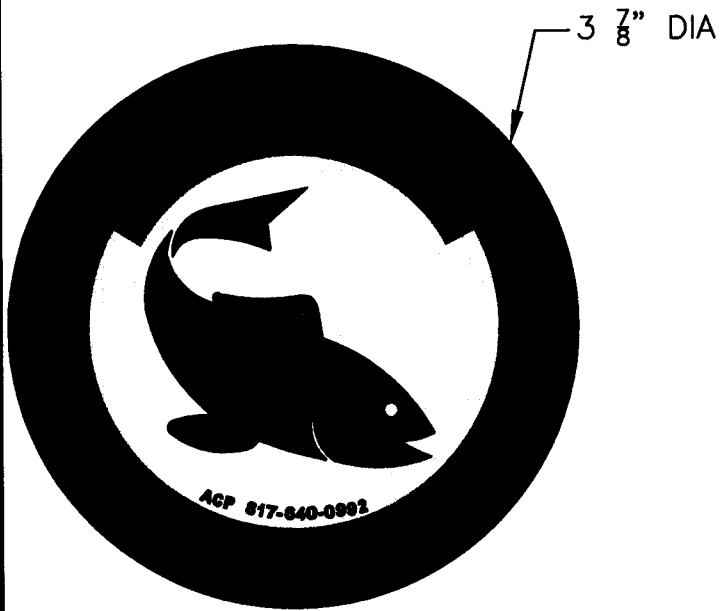
STANDARD No. D-630 SHEET 1 OF 1

CITY OF  
FARMINGTON

PUBLIC  
WORKS  
DEPARTMENT

APPROVED *[Signature]* DATE *4/15/08*

FRONT VIEW



BACK VIEW



PATTERN FOR APPLYING ADHESIVE

NOTES

- 1) ALL STORMDRAIN INLETS SHALL BE LABELED WITH MARKERS APPROVED BY THE CITY ENGINEER.
- 2) STORM DRAIN MARKERS MAY BE OBTAINED FROM THE CITY OF FARMINGTON PUBLIC WORKS DEPARTMENT.

APPLICATIONS INSTRUCTIONS:

- 1) WIRE BRUSH DIRT OR LOOSE IMPEDIMENTS FROM A FLAT, DRY SURFACE.
- 2) APPLY ADHESIVE ON THE BACK OF THE MARKER ABOUT 1/8" FROM THE OUTER EDGE AND THEN WORK TO THE CENTER OF THE MARKER. SEE PATTERN ON BACK VIEW.
- 3) WHEN APPLYING THE MARKER, PRESS DOWN HARD ENOUGH TO FORCE THE ADHESIVE OUT AROUND THE ENTIRE EDGE OF THE MARKER. ENSURE THAT THE ENTIRE EDGE OF THE MARKER IS SEALED.

ADHESIVE:

USE SLATE GRAY OUTDOOR ACRYLIC LATEX CAULK PLUS SILICONE THAT IS MOLD AND MILDEW RESISTANT, PROVIDES A WATER PROOF SEAL, AND IS PERMANENTLY FLEXIBLE.

CONSTRUCTION  
STANDARDS

STORM DRAIN MARKERS

STANDARD No. D-631 SHEET 1 OF 1

CITY OF  
FARMINGTON

PUBLIC  
WORKS  
DEPARTMENT

APPROVED *[Signature]* DATE 4/15/08